

Consultation-Liaison SIG Quarterly Newsletter

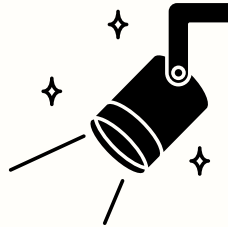
Winter Edition

C/L SIG NEWSLETTER

2026

As winter shifts toward spring and training season is in full swing, we're deep into the rhythm of C/L. Between busy consult lists, teaching trainees, and the extra coffee this time of year demands, we hope these weeks bring moments of warmth and connection. Here's to the collaboration, compassion, and good humor that keep our C/L community strong!

 The C/L SIG Team

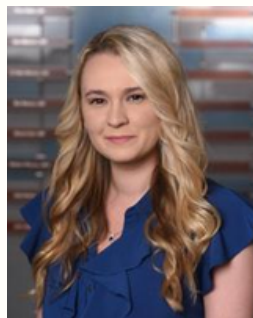


New Leadership Spotlight

Please join us in welcoming the newest members of our leadership team! Dr. Giannini, previously our Communications Co-Chair, will be continuing her service as Board Co-Chair. Dr. Yahle joins us as the new Communications Co-Chair, and Sabrina Blank will serve as our Student Representative.



Courtney J Giannini, Ph.D.
Norton Children's Hospital



Courtney Ann Yahle, Psy.D.
Dayton Children's Hospital



Sabrina Blank, B.A.,
Clinical Psychology
doctoral student at
Wayne State University





Annual CL SIG All Members Virtual Meeting - April 7th at 12:00 EST
(link coming soon)

Be on the Lookout!

In preparation for the upcoming Society of Pediatric Psychology Annual Conference in Las Vegas, NV we will be sending out the following:

- A link to our Annual CL SIG All Members Virtual Meeting
- A list of CL-related presentations you may want to check out
- Any in-person gatherings for CL SIG members

THANK YOU!

We would like to sincerely thank the **182** current and former consultation-liaison (C/L) psychologists and trainees who contributed their time and expertise to our recent survey! Your responses provided invaluable insight into the current landscape of C/L psychology and will help inform future development of the field.

Be on the lookout for manuscripts disseminating these findings!

Want to Be Featured?

We want to know what research our SIG members are doing in the area of C/L! Below is a link to a Google Form to share your published research in our next newsletter, come Fall.

[Click here!](#)

Behavior Management Coffee Talk Highlights



Thank you to Drs. Courtney Giannini, Ayla Mapes, Amanda Burnside, and Katherine Spencer for leading a wonderful Coffee Talk on evidence-based behavior management in pediatric hospital settings. The session highlighted practical strategies, explored systemic barriers faced by pediatric psychologists across hospital settings, and offered actionable recommendations and resources for implementation at participants' home institutions. Slides from the presentation are available below.



[Slides](#)

Interested in a Collab?

Research: In an effort to facilitate research collaboration among C/L psychologists and trainees, we created a survey to assess individuals' interests in potential C/L research ideas.

[Click here!](#)

Education: We love to collaborate with other SIGs for CE's & Coffee Talks! Please email *Laurie Cardona-Wolenski* (laurie.cardona@yale.edu) or *Courtney Giannini* (courtney.giannini@louisville.edu) with inquiries.



Contact Us

mariah.montgomery@ascension-external.org
YahleC@childrensdayton.org