

SOCIETY OF PEDIATRIC PSYCHOLOGY CRANIOFACIAL SIG

Division 54, Society of Pediatric Psychology

In this issue:

- Notes from the Co-Chairs
- Annual Conference Updates
- Student Outreach
- SIG Survey Results
- Member Publications and Presentations

Notes from the Co-Chairs

It's been a great year and it's hard to believe we are in the summer months already! We thank Canice Crerand for her work over the past two years as co-chair and welcome Alessia Johns as our new co-chair. Over the past few months our SIG has been well represented at both ACPA and SPPAC, with SIG gatherings at both meetings! We look forward to pursuing some of the ideas generated at these meetings in the year ahead!

ACPA Conference Update [Alessia Johns]

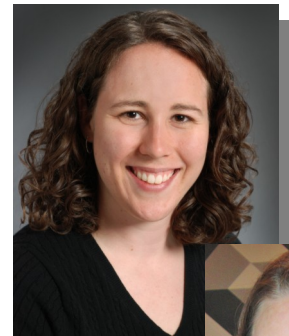
The 74th Annual Meeting of the ACPA was held in Colorado Springs March 13-18, 2017 at the historic Broadmoor hotel with beautiful weather and stunning mountain views. Psychology presentations were well represented throughout the general and concurrent sessions. There were multiple committee and task force meetings with psychology participation as well. The SIG meeting addressed training outreach, useful resources, and future research and presentation possibilities. We also had a well-attended and lively mental health forum which addressed a range of concerns facing mental health providers working with craniofacial populations, particularly in the current political context. The need for a central platform for resources was expressed. It was announced that the Cleft Palate Foundation will merge with ACPA and continue to have all of the family resources available online at <http://acpa-cpf.org/families/>

Goals/Mission:

The SIG seeks to improve understanding and treatment of behavioral, emotional, academic, medical, and familial issues that patients experience through evidence-based practice.

SPP Conference Update [Tricia Marik]

The 2017 Society of Pediatric Psychology Annual Conference was held in March in Portland, OR. In addition to beautiful views of Mt. Hood and creative and delicious ice cream flavors at Salt & Straw (Ramen or pear blue cheese anyone?), this conference was also a great chance to connect with other Pediatric Psychologists and Pediatric Psychology trainees from around the country and the world. Topics addressed included ethics, supervision, psychology in primary care, research models and health care disparities. Additionally, there were four poster sessions throughout the conference with posters on a wide variety of topics including "Pre-and Post-Surgical Neurodevelopmental Evaluations on Infants with Single-Suture Craniosynostosis (SSC) at the Oregon Health and Science University (OHSU): What is the Ideal Age of Operation" by Justin Lee, Laine Atcheson & Mina Nguyen-Driver. We had an engaging Craniofacial SIG meeting that was attended by several individuals who were not yet SIG members but were interested in joining our group. We're already looking forward to the 2018 SPPAC in Orlando, scheduled for April 5-7. Stay tuned to the SIG listserve for information regarding the conferences call for abstracts and possible opportunities for collaboration on submissions!



SIG

Structure:

Co-Chairs:

- Patricia Marik, PsyD
- Alessia Johns, PhD

Student Representative:

- Emily Wolodiger

Committees:

- Outreach/Recruitment Committee
- Evidence Based Practices Committee



Please consider being a reviewer for the Behavioral Sciences Section of *The Cleft Palate-Craniofacial Journal*! The journal is transitioning to SAGE Publishing <https://mc.manuscriptcentral.com/cpcj> and continues to also be available through Allen Press through the end of 2017 http://cpcj.allentrack.net/cgi-bin/main.plex?form_type=home.

Please register as a reviewer through the publisher links including your areas of expertise or by emailing ajohns@chla.usc.edu expressing your interest in being added as CPCJ reviewer.

Call for Abstracts

The American Cleft Palate-Craniofacial Association (ACPA) is now accepting abstracts for ACPA's 75th Annual Meeting, April 10-14, 2018 in Pittsburgh, PA. All ACPA members and interested nonmembers are invited to submit abstracts on new research, developing information or instructional courses on cleft lip/palate and craniofacial anomalies. ACPA's 75th Annual Meeting will explore advances in research, clinical and team-driven care of patients as we honor the past, challenge the present, and inspire the future.

Submissions can be made through the ACPA website: <http://meeting.acpa-cpf.org/abstracts.html>

Student Outreach (Emily Wolodiger)

My primary goal as Student Representative is to increase student involvement in our SIG. In order to increase awareness of the SIG to students, I will be emailing and calling Cleft/Craniofacial Centers throughout the United States to assess whether they have existing psychology trainees, or whether they would be open to having psychology trainees in the future. I will provide information about our SIG and will request that clinical supervisors encourage their students to join. It is also important for students that are interested in Craniofacial care to have resources about where they can enhance their training in this area. Therefore, I will be generating a list of pre-doctoral internships that include opportunities to work in Cleft/Craniofacial Centers. Please feel free to email me (emily_wolodiger@rush.edu) with other ideas on promoting student engagement in our SIG!

The Coping Club website (www.copingclub.com) contains "patient-generated videos for kids to help them better understand their medical condition and share ways in which they have handled the stressors associated with their illness and hospitalization". There are currently not any videos related to cleft or craniofacial conditions. Please contact Dr. Bryan Carter (bryan.carter@louisville.edu) if you are interested in creating a cleft or craniofacial patient video to add to the Coping Club website.

Fact Sheets

The current craniofacial resources on the Division 54 webpage include:

Fact Sheet: Cleft Lip and/or Palate

Fact Sheet: Complex Craniofacial Conditions

Assessment Resource Sheet: Craniofacial Populations

Fact Sheet for Mental Health Providers: Cleft Lip and/or Palate

Additional fact sheets being drafted include 22q11.2 Deletion

Syndrome, Craniosynostosis, and Craniofacial Microsomia/Microtia. Please contact ajohns@chla.usc.edu if you have interest in additional topics or would like to contribute to writing a fact sheet.

SPP SIG policies require all members of SIGs to be members of SPP. Unfortunately that means that we will have to remove anyone who is not a SIG member from this listserve on September 1st. Please make sure your SPP membership is active before September 1st. You can check your membership status on the SPP website.

SIG Survey results:

Last year a survey was distributed on the SIG listserve to better understand the conferences our members attend. Thank you to everyone who participated. The results were sent to the SIG listserve in July 2016. To summarize, we gathered responses from 13 doctoral level psychologists. 75% of respondents work part time in a cleft/craniofacial clinic, with significant variability in the percentage of position being dedicated to this clinic. 69% of respondents also conduct research with cleft/craniofacial populations and 61% are involved in training students in cleft/craniofacial care. With regards to conference attendance, 30% of respondents attend SPP on a regular basis and 69% attend ACPA on a regular basis. Conference programming was identified as the factor respondents found most important when selecting conferences to attend.

Student Spotlight — Emily Wolodiger

“I am really excited to be the student representative of the Craniofacial SIG! I am currently in my 5th year at St. John’s University’s Clinical Psychology PhD program. I am mentored by Dr. Alice Pope. My dissertation research examines the transactional relationship between parenting stress and psychosocial adjustment of children with congenital craniofacial anomalies. Clinically, I really enjoy working with children and adolescents with internalizing problems, as well as helping their parents respond effectively to their needs. I recently began my pre-doctoral internship at Rush University Medical Center in Chicago, where my clinical work is in both psychiatric and pediatric settings. I feel fortunate to have the opportunity to provide therapy to families of children with congenital problems and chronic illnesses, given the importance of psychosocial care in these populations. I am eager to participate in Rush’s Craniofacial Team and practice what I have learned from my research in this area.”



Member Publications and Presentations

Conrad AL, Goodwin JW, Choi J, Block RI, Nopoulos P. The Relationship of Exposure to Anesthesia on Outcomes in Children With Isolated Oral Clefts., *Journal of child neurology*. 2017 March 1;32(3):308-315. PMID:28193114. doi: 10.1177/0883073816681257

Conrad AL, Crerand CE, Albert M, Crilly Bellucci C, Heppner CE, Sheikh F, Woodard S, Kapp-Simon KA. Spotlight on the Craniofacial Special Interest Group, *Clinical Practice in Pediatric Psychology*. 2017 March;5(1):62-64

Crerand CE, **Conrad AL**, Albert M, Crilly Bellucci C, Heppner CE, Sheikh F, Woodard S, Kapp-Simon KA. The Americleft Psychosocial Outcomes Project: A Multicenter Approach to Advancing Psychosocial Outcomes for Youth With Cleft Lip and Palate, *Clinical Practice in Pediatric Psychology*. 2017 March;5(1):65-76.

Goodwin J, **Conrad AL**, Ansley T, Nopoulos P. Arithmetical Computation and Associated Neuropsychological Capabilities in Children, Adolescents, and Young Adults with Isolated Orofacial Clefts, *Neuropsychology*. Accepted/In Press.

Johns, A, Lewin, S, & Im, D. Teasing in younger and older children with microtia before and after surgery. *Journal of Plastic Surgery and Hand Surgery*. 51:205-209, 2017. PMID27609237

Gardner, O, Haynes, K, Schweitzer, D, **Johns, A**, Magee, W, Urata, M, & Sanchez-Lara, P. Familial recurrence of 3MC Syndrome in consanguineous families: A clinical and molecular diagnostic approach with review of the literature. *The Cleft Palate-Craniofacial Journal*. In press. PMID27356087

Johns, A, Gutierrez, Y, Nicolaou, DC, Garcia, L, Céspedes-Knadle, Y, & Bava, L. A support group for caregivers of children with craniofacial differences. *Journal of Social Work in Groups*. In press. doi: 10.1080/01609513.2017.1333480

We're online:

<http://www.societyofpediatricpsychology.org/craniofacial>

Alessia Johns
ajohns@chla.usc.edu

Tricia Marik
pmarik@chw.org