

Michael Roberts

**FLORIDA CONFERENCE
ON
CHILD HEALTH PSYCHOLOGY**

Sponsored By

UF Department of Clinical and Health Psychology

The Society of Pediatric Psychology

The Division of Health Psychology



*Gainesville, Florida
April 24-26, 1997*

Sixth Florida Conference on Child Health Psychology

The continued success of the Florida Conference on Child Health Psychology depends largely on the financial contributions of various organizations. The Conference has a history of providing a scientific program of outstanding quality as well as several social events that provide opportunities for more informal interactions among participants. Such activities would not be possible without financial support. The Program Committee would like to thank and acknowledge the sponsors and contributors listed below.

Sponsors

*University of Florida Department of Clinical
and Health Psychology*

The Society of Pediatric Psychology

The Division of Health Psychology

Contributors

Shands at Vista

Psychological Assessment Resources, Inc.

*Florida Psychological Association, North Central
Florida Chapter*

University of Florida College of Health Professions

*University of Florida Center for Pediatric Psychology
and Family Studies*

WELCOME

TO THE SIXTH FLORIDA CONFERENCE ON CHILD HEALTH PSYCHOLOGY

We would like to take this opportunity to welcome each of you to the Sixth Florida Conference on Child Health Psychology. We hope that you will find the conference to be an informative one and your stay in Gainesville enjoyable. To increase the likelihood of both there are several aspects of the conference that are worthy of note.

First, on Thursday and Friday, paper sessions will begin at 8:30 AM (9:00 AM on Saturday). Each morning's paper session will be preceded by a discussion hour that deals with special topics of general interest to Child Health Psychologists. To facilitate your ability to concentrate at this early hour, a continental breakfast will be available for those attending discussion hours, as well as for others prior to the beginning of the morning paper sessions. In addition, a complementary lunch will be provided for all registrants during the conference poster sessions which are scheduled during the noon hours on Thursday (April 24) and Friday (April 25).

To complement the more content-oriented aspects of the conference, we have scheduled several social activities that we hope will add to your enjoyment and facilitate attendees and participants getting to know one another. These include a reception and poster session on Wednesday, April 23rd (7:00 PM - 10:00 PM) at the University Centre Hotel. There will be a reception followed by an evening at the Hippodrome State Theatre on Thursday, April 24th (transportation will be by bus; schedules for departure and return are provided in the program). On Friday, April 25th we invite you to join us in the President's Box at Florida Field (home of the #1 Gators) for a traditional UF tailgating party (again, bus schedules are included in the program).

For those wishing to obtain psychology continuing education credit for attendance at each of the five paper sessions and the Frontiers in Pediatric Psychology address, a Continuing Education table has been set up for your convenience. To receive CE credit for a particular session, it will be necessary to sign an attendance sheet for that session and pick up a session evaluation form as you enter. Immediately following the session, return the completed evaluation form to the CE table to obtain a CE certificate for that session.

This year the Conference Planning Committee wishes to honor participants who have attended all six Florida Conferences on Child Health Psychology (special thanks to Lynn Walker for the idea!). Look for those with ribbons on their badges and congratulate them for their "perfect attendance".

Again, we hope each of you will find the conference to be informative and your stay with us enjoyable. If during the conference you have any additional questions that are not answered here or in the program simply ask any member of the Conference Planning Committee. These individuals can be identified by the small alligator attached to their conference name tags.

Steve Boggs

Co-Chair Conference Planning Committee

ACKNOWLEDGMENTS

No conference can take place without the support, financial and otherwise, of many individuals and groups. This one is no exception. In this regard we must acknowledge the direct financial support of the sponsors and contributors, the University of Florida Department of Clinical and Health Psychology, the Society of Pediatric Psychology, the Division of Health Psychology of the American Psychological Association, the University of Florida Center for Pediatric Psychology and Family Studies, the North Central Florida Chapter of the Florida Psychological Association, Psychological Assessment Resources, Inc., The University of Florida College of Health Professions, and Shands at Vista. The encouragement and support provided by Dr. Nathan W. Perry, Chair of the Department of Clinical and Health Psychology, and Dr. Robert Frank, Dean of the College of Health Professions, have been instrumental in organizing this year's Florida Conference.

The names of those faculty and students who served on various conference-related committees and who did the work necessary to make the conference a reality are listed below. In addition, the administrative and secretarial support and overall helpfulness of Ruth Spencer, Peggy Bessinger, Crystal Lee, Richelle Anstead, and Sharon Short (Department of Clinical and Health Psychology) is gratefully acknowledged.

CONFERENCE PLANNING COMMITTEE

Steve Boggs and Jim Rodrigue, *Co-Chairs*; Sheila Eyberg, Gary Geffken, Jacque Goldman, Jim Johnson, Suzanne Johnson, Michael Perri, Marika Spevack, and Randi Streisand.

PROGRAM COMMITTEE

Steve Boggs and Jim Rodrigue, *Co-Chairs*; Margaret Booth-Jones, Sheila Eyberg, Gary Geffken, Jacque Goldman, Jim Johnson, Suzanne Johnson, Angie Lane, Michael Perri, Elena Schuhmann, Marika Spevack, and Randi Streisand.

SOCIAL/RECREATION COMMITTEE

Suzanne Johnson and Marika Spevack, *Co-Chairs*; Pam Bukowski, Jim Carter, Caroline Elder, Jenifer Jacobs, Amy Perwien, and Nataliya Zelikovsky.

LOCAL ARRANGEMENTS COMMITTEE

Jim Rodrigue, *Chair*; Christine Banko, Beth Bryant, Tricia Durning, Lyana Doty, Johanna Esquerre, Rebecca Foote, Chris Houck, Angie Lane, Kathy MacNaughton, Linda Monaco, Ben Phalin, Elena Schuhmann, Randi Streisand, Ken Tercyak, and Tricia Zawacki.

CONTINUING EDUCATION & EVALUATION

Sheila Eyberg, *Chair*; Gloria Brinson and Celia Lescano.

Thanks are also due to Gary Geffken for help with conference publicity.

THE SIXTH FLORIDA CONFERENCE ON CHILD HEALTH PSYCHOLOGY
GAINESVILLE, FLORIDA
APRIL 23 - 26, 1997

WEDNESDAY APRIL 23, 1997

Reception and Poster Session

7:00 PM - 10:00 PM

University Centre Hotel (11th Floor)

Poster listing on page 11

THURSDAY APRIL 24, 1997

Discussion Hour:

"Job Diversity in Pediatric Psychology: Looking Towards the Future"

7:30 AM - 8:30 AM

Chair: *Randi Streisand* - University of Florida

Participants: *Pamela Bachanas, Ph.D.* - Emory University School of Medicine

Tim Wysocki, Ph.D. - Nemours Children's Hospital

Mary Evers-Szostak, Ph.D. - Durham Pediatrics

THURSDAY APRIL 24, 1997

MORNING PAPER SESSION - BEGINNING AT 8:30 PM

INTRODUCTIONS:

Steve Boggs - Department of Clinical and Health Psychology, University of Florida

Jim Rodrigue - Member at Large, Society of Pediatric Psychology

Suzanne Johnson - 1995 President of APA Division of Health Psychology

COMPLIANCE, ADHERENCE, AND SELF-CARE

TOPIC CHAIR:

Suzanne Bennett Johnson, Ph.D. - University of Florida

Self-care regimen adherence and independence and quality of life in adolescents with insulin-dependent diabetes mellitus - Luanne A. Turrentine, Jan L. Wallander, and Joy Atchison, University of Alabama at Birmingham.

Sharing family responsibility for asthma management tasks - Elizabeth L. McQuaid, Jack H. Nassau, Gregory K. Fritz, Brown University School of Medicine.

Maintenance of treatment gains from behavior therapy for families of adolescents with insulin-dependent diabetes mellitus - Tim Wysocki, Peggy Greco, Michael A. Harris, Jeanne Bubb, Caroline L. Elder, Linda M. Harvey, Kelly McDonell, Alexandra Taylor, Neil H. White,

Nemours Children's Clinic, University of Florida, Washington University School of Medicine, and St. Louis Children's Hospital.

COFFEE BREAK

Long-term outcome of a metabolic camp for adolescents with phenylketonuria (PKU) and maple syrup urine disease (MSUD) - Julie A. Kable, Rani Singh, and Nicole Guerrero, Emory University School of Medicine.

Enhancing adherence among multicultural adolescents: Patients' and practitioners' use of alternative health practices - Kimberly Shaw, Onelia Lage, Kristen Thompson, Lawrence Friedman, Marylyn Broman, University of Miami School of Medicine.

DISCUSSANT:

Suzanne Bennett Johnson

POSTER PRESENTATIONS - 11:30 AM - 1:30 PM

Poster listing on page 14

(COMPLEMENTARY LUNCH PROVIDED)

AFTERNOON PAPER SESSION - BEGINNING AT 1:30 PM

CHILD ABUSE, NEGLECT, AND INJURY

TOPIC CHAIR:

Diane J. Willis, Ph.D. - University of Oklahoma Health Sciences Center

Clinical assessment of minimal parenting competence: Applicability to teen mothers and other "at-risk" populations - Karen S. Budd, DePaul University.

Behavior problems and professional level of sexual abuse suspicion in young children - Molly M. Garwood, University of Notre Dame, W. Hobart Davies, Children's Hospital of Wisconsin, Stephen Lazoritz, Medical College of Wisconsin.

COFFEE BREAK

Sexual abuse among HIV-infected minority female adolescents: Attachment theory and treatment implications - Kimberly Shaw, Patricia McLendon, Lawrence Friedman, Marylyn Broman, University of Miami School of Medicine.

Post traumatic stress symptoms in children following traumatic brain injury: A twelve month follow up study - Rachel Levi, Dennis Drotar, Case Western Reserve University, Keith O. Yeates, Children's Hospital of Columbus, H. Gerry Taylor, Rainbow Babies & Children's Hospital.

Effects of television safety content on children's physical risk-taking and hazard identification -
Richard Potts & Lisa Swisher, Oklahoma State University.

DISCUSSANT:

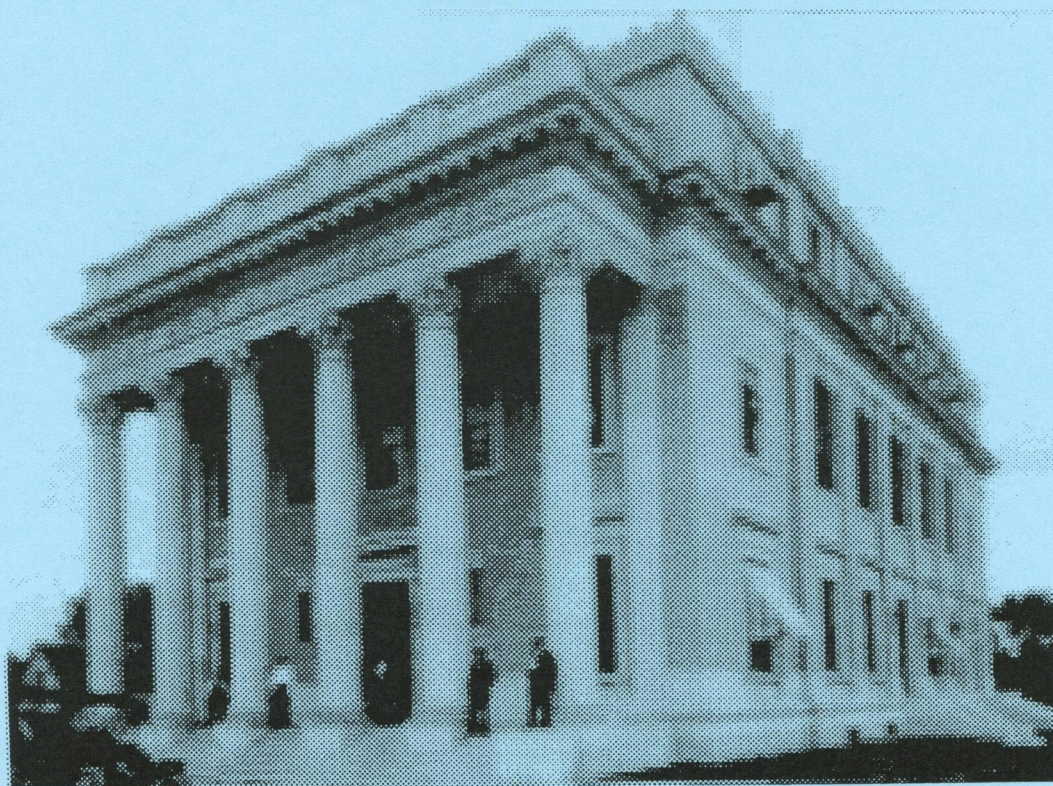
Diane J. Willis

THURSDAY, APRIL 24, 1997

Frontiers in Pediatric Psychology Invited Address:
"Emerging Psychological Issues in Genetic Testing for Breast Cancer Susceptibility"
4:30 PM
Caryn E. Lerman - Georgetown University Medical Center

Conference Social
Reception and Theatre
6:00 PM - 10:00 PM
The Hippodrome State Theatre
"Always Patsy Cline"

Please wear your badge for admission.
Buses will depart at 5:30 and 6:00 PM and return at 10:00 PM.



FRIDAY APRIL 25, 1997

Discussion Hour:

"International Activities in Pediatric Psychology"

7:30 AM - 8:30 AM

Chair: *Jan Wallander, Ph.D.* - University of Alabama at Birmingham

FRIDAY APRIL 25, 1997

MORNING PAPER SESSION - BEGINNING AT 8:30 AM

INTERVENTION RESEARCH IN PEDIATRIC PSYCHOLOGY

TOPIC CHAIR:

John R. Weisz, Ph.D. - University of California at Los Angeles

An evaluation of the efficacy of group behavior parent training vs. nutrition education interventions for improving nutritional status in children with CF and the effects on family functioning - L.C. Opiari, L.E. Spieth, L.J. Stark, A.L. Quittner, E. Jelalian, F. Powers, L. Higgins, V. Stallings, C. Duggan, Brown University School of Medicine, Indiana University, Children's Hospital of Philadelphia, and Children's Hospital Boston.

Teaching parents methods to help young children cope with outpatient surgery: Comparison of two distraction interventions - T.M. Palermo, D.D. Drotar, M.S. Toivonen, Case Western Reserve University.

Clinical research trials as effective pediatric interventions: A comparison of asthmatic trial participants and non-participants on asthma management and perceived quality of care - Melissa Van Horn, Kay Seligsohn, Janice Ware, and Scott Weiss, Children's Hospital Boston.

COFFEE BREAK

EMG recording of pelvic floor conditioning in nocturnal enuresis during urine alarm treatment: A preliminary study - Michael W. Mellon, Arkansas Children's Hospital, Mark A. Scott, Arkansas Psychological Services, Kevin B. Haynes, Doug F. Schmidt, Baptist Sleep Disorders Center, Arthur C. Houts, University of Memphis.

Evaluation of a skills-based intervention for the prevention of sexually transmitted diseases in an adolescent population - Lawrence J. Siegel, Yeshiva University.

DISCUSSANT:

John R. Weisz

FRIDAY APRIL 25, 1997

POSTER PRESENTATIONS - 11:30 AM - 1:30 PM

Poster listing on page 18

(COMPLEMENTARY LUNCH PROVIDED)

AFTERNOON PAPER SESSION - BEGINNING AT 1:30 PM

GENERAL SESSION

SESSION CHAIR:

James H. Johnson, Ph.D. - University of Florida

✓ Pediatric consultation in a children's hospital: An evaluation of services and reimbursement practices - Janet G. Baker and Bryan Carter, University of Louisville.

Risk-resistance adaptation model for children with sickle cell syndromes - Ronald T. Brown, Emory University School of Medicine and Rollins School of Public Health, Carolyn E. Ievers and Joan E. Donegan, Emory University School of Medicine.

Quality of life among children with a chronic illness, the development of a questionnaire - J. Bruil, S. Maes, University of Leiden, Section Health Psychology (Leiden, The Netherlands).

COFFEE BREAK

Neurodevelopmental outcome of Ugandan infants with HIV infection - Dennis Drotar, Karen Olness, and Chris Schatschneider, Case Western Reserve University.

The value of social comparison theory in determining adjustment in long-term survivors of childhood cancer - Christine Eiser, University of Exeter (Exeter, Devon, UK)

Cognitive and behavioral functioning in survivors of congenital heart disease: Genetic and cardiac care components - E. Wayne Holden, Kathryn Ellerbeck, Joel Brenner & Alex Gomelsky, University of Maryland School of Medicine.

✱ The effects of a parental life-threatening illness on the behavior of children - Christa M. Holland, The University of Oklahoma Health Science Center, Andrew S. Bradlyn, West Virginia University Health Science Center.

DISCUSSANT:

James H. Johnson

FRIDAY APRIL 25, 1997

Conference Social

"A UF Tailgating Party"

The President's Box

Florida Field

6:00 PM - 9:00 PM

Buses will leave at 6:00 PM and return at 8:30 PM and 9:00 PM.



SATURDAY APRIL 26, 1997

Discussion Hour:

"Managing Managed Care"

8:00 AM - 9:00 AM

Co-Chairs: *Michael Roberts, Ph.D.* - University of Kansas

Linda Hurley, Ph.D. - Fort Worth Pediatrics

MORNING PAPER SESSION - BEGINNING AT 9:00 AM

SYSTEMS-BASED APPROACHES TO PEDIATRIC PSYCHOLOGY RESEARCH

TOPIC CHAIR:

Anne Kazak, Ph.D. - Children's Hospital of Philadelphia

The impact of caregiving on the marital relationship: Tracking daily changes in role strain, activities, and intimacy - Alexandra L. Quittner, Dorothy L. Espelage, Lisa C. Opiari, Indiana University, Bryan Carter and Nemr Eid, University of Louisville.

Determinants of acute and short-term adjustment in pediatric bone marrow transplant: Pre-morbid adjustment, family environment and social support - Sean Phipps, Maggi Dunavant, Deo K. Srivastava, St. Jude Children's Research Hospital, Memphis, Tennessee.

COFFEE BREAK

Children's reactions to somatic symptoms in their peers - Jessica W. Guite, Lynn S. Walker, and Craig A. Smith, Vanderbilt University.

Children's behavioral intentions and friendship preferences for chronically ill youth: Pediatric cancer as an example - Anita L. Bukowski and Heidi M. Inderbitzen, University of Nebraska-Lincoln.

Social desirability of physical risk-taking in children - Leslie Schwarz and Richard Potts, Oklahoma State University.

DISCUSSANT:

Anne Kazak

POSTER PRESENTATIONS

WEDNESDAY APRIL 23 - 7:00 PM - 9:00 PM

(Please note: The number beside each entry indicates the poster board number for the presentation.)

1. Racial differences in parent and child perceptions of child anxiety - Janice W. Walton and Suzanne B. Johnson, University of Florida.
2. Long-term social and behavioral outcomes among children with brain tumors - Kristin A. Kullgren, Robin D. Morris, and Mary K. Morris, Georgia State University, Nicolas Krawiecki, Emory University School of Medicine.
3. The short-term impact of individualized asthma education on caregiver asthma knowledge and quality of life - Kristin A. Kullgren, Georgia State University, Mary Jane Richman, Scottish Rite Children's Medical Center, Robin D. Morris, Georgia State University, Peter S. Scott, Scottish Rite Children's Medical Center.
4. The Sickle Cell Disease Knowledge Questionnaire: Its relationship to patient knowledge, use of appropriate disease management techniques, and health care utilization - Christina Adams, West Virginia University, Johanna Esquerre, James Rodrigue, University of Florida, Elizabeth Lloyd, Tana Hope, and Mary Lou Kelley, Louisiana State University.
5. Patient and family perceptions of the use of subcutaneous insulin to prevent insulin-dependent diabetes mellitus - Kenneth P. Tercyak, Jr., Suzanne B. Johnson, Desmond Schatz, University of Florida.
6. Coping with cancer in adolescence - Michele L. Rosa and Heather C. Huszti, University of Oklahoma.
7. Quality of life in youths with cystic fibrosis: Relationship to psychosocial functioning and health outcomes - Deborah Schenck, Susan Dandes, Alan Delamater, University of Miami School of Medicine, William Burns, Alfred Sellers, Nova Southeastern University, Kunjana Mavunda, and Robert McKey, Jr., University of Miami School of Medicine.
8. Empowerment and morbidity in pediatric asthma - Catherine L. Grus, Cristina López-Hernández, Alan Delamater, Brooks Appelgate, Arturo Brito, Henry Artiguez, Gwen Wurm, Adam Wanner, University of Miami School of Medicine.
9. Easier said than done: The relationship between what parents say they do to help their child and what they actually do during children's immunizations - Lindsey L. Cohen, Reena Manimala, and Ronald L. Blount, The University of Georgia.
10. The efficacy of a behavioral weight loss program for children: A case study - Jo Anne B. Gorski and Kimberly Shaw, University of Miami School of Medicine.

11. The role of hope in the adjustment of mothers raising children with chronic physical conditions - Trudi V. Horton, and Jan L. Wallander, University of Alabama at Birmingham.
12. Adolescents' perceptions of sexuality discussions in primary care settings - Susan L. Rosenthal, Paul A. Succop, Frank M. Biro, Kim D. Shedd, Kathleen A. Burklow, Children's Hospital and University of Cincinnati Medical Centers.
13. Parent presence during anesthesia induction: More satisfied parents and calmer children - M.S. Toivonen, T.M. Palermo, and P.M. Tripi, Case Western Reserve University School of Medicine.
14. Perinatal loss: An exposure-based approach to treating grief reactions in bereaved parents - Michele L. Rosa, University of Oklahoma.
15. Adolescents with diabetes and their healthy siblings: Predictors of self-acceptance and self-efficacy - Natasha Baack, Kelly King, Keri Brown, L. Kaye Rasnake, Gina A. Dow, Denison University.
16. Are sibling roles altered when one child has diabetes? - Cheryl H. Colvin, Suzanne B. Johnson, and James R. Rodrigue, University of Florida.
17. Social functioning late effects in child and adolescent cancer survivors - Wendy L. Newby, North Carolina State University, Ronald T. Brown, Emory University School of Medicine.
18. Predicting depression in mothers and fathers of children with cancer - Natalie C. Frank, George Washington University, Ronald L. Blount, University of Georgia, Ronald T. Brown, Emory University, Vicky Bunky, University of Georgia.
19. Friend support for low-income adolescents with IDDM - Kristen M. Thompson, Annette M. La Greca, Kimberly H. Shaw, University of Miami.
20. The structure and function of social support for school-age children coping with chronic stress - E. Lisako Jones, Dorienna Harris, Sarah Lowery, and Alexandra Quittner, Indiana University.
21. Childhood cancer: A two year prospective study of the psychological adjustment of children and parents - Michael Sawyer, University of Adelaide, Georgia Antoniou, Ian Toogood, and Michael Rice, Women's and Children's Hospital.
22. Adults' perceptions of children with cancer: An investigation of potential methodological confounds - Elizabeth Fischer and Brenda O. Gilbert, Nemours Children's Clinic.
23. The association of parental education and family conflict among families with adolescents with IDDM - Kelly McDonell, Linda Harvey, Peggy Greco, Tim Wysocki, Michael Harris, and Neil White, Nemours Children's Clinic, Washington University School of Medicine, and St. Louis Children's Hospital.

24. Adult bias regarding cocaine-exposed children - Lisa Maag, Fonda D. Eyler, University of Florida, Nanci S. Woods, Austin Peay State University, Marylou Behnke, Kathie Wobie, and Michael Conlon, University of Florida.
25. Predictors of psychological distress and well-being in the caregivers of children with or at-risk for HIV infection - Kathryn M. Miller, Nemours Children's Clinic, Jack W. Finney, Virginia Polytechnic Institute and State University, Vicki Tepper, University of Maryland School of Medicine.
26. Disclosure in pediatric HIV/AIDS - Kathryn M. Miller, Nemours Children's Clinic, Jack W. Finney, Virginia Polytechnic Institute and State University, Vicki Tepper, University of Maryland School of Medicine.
27. STEP: A structured therapeutic approach to pediatric hospitalization - Chad C. Nelson, Steven E. Band, Jean Sullivan-Hanson, Dennis Draper, and Ken Macurik, Mount Washington Pediatric Hospital.
28. Pain management in a 17-year-old with cerebral palsy - Judith R. Mathews, Denise Bilyeu, MaryLou Fleurl, and J. Kugler, University of Nebraska Medical Center.

POSTER PRESENTATIONS

THURSDAY APRIL 24 - 11:30 AM - 1:30 PM

(Please note: The number beside each entry indicates the poster board number for the presentation.)

1. Posttraumatic stress in children following acute physical injury - Jeffrey Aaron, Virginia Commonwealth University.
2. Compliance with a prophylactic regimen for children with hemophilia - Heather C. Huszti, University of Oklahoma, Marilyn Manco-Johnson, Brenda Riske, and Rachelle Nuss, University of Colorado.
3. Psychosocial consequences of hemophilia - Heather Huszti, Sharon Lancaster, Linda Cowan, and Shari Kinney, University of Oklahoma and the Oklahoma State Department of Health.
4. Child Abuse and Substance Abuse - Lizette Peterson, George Tremblay, and Lisa Saldana, University of Missouri-Columbia.
5. Coping with exposure to violence in inner-city children - Margaret Dempsey, Tulane University.
6. Assessment of adherence with multiple informants in pre-adolescents with spina bifida: Initial development of a multidimensional, multi-task parent-report questionnaire - Grayson N. Holmbeck, Mariana C. Belvedere, Michelle Christensen, Ann Marie Czerwinski, Jennifer S. Hommeyer, Sharon Z. Johnson, Eva Kung, Loyola University of Chicago.
7. Problem solving ability in mothers of infants with failure to thrive - Jane R. Robinson, Dennis Drotar, M. Boutry, Case Western Reserve University.
8. The comorbidity of pediatric obesity and attention-deficit/hyperactivity disorders preliminary results - Paul M. Robins, David Sheslow, Elizabeth de Lancey, and Sandra G. Hassink, The duPont Hospital for Children.
9. The Pediatric Hematology-Oncology Satisfaction Survey (PHOSS): A measure of parent satisfaction with pediatric cancer care - Daniel J.L. Quiggins, Children's Hospital of Michigan.
10. Comparison of sexual risk taking behaviors between HIV positive and HIV negative adolescents - Jeffrey T. Parsons and Heather C. Huszti, Jersey City State College and University of Oklahoma.
11. How preschool age children cope with procedures and recovery on intensive care units - Laura Nabors, Murray Kappelman, Kristine Cromwell, Peter Brawer, and Erin O'Meara, University of Maryland School of Medicine.

12. Disease severity and psychosocial adjustment in children with spina bifida - Jennifer S. Hommeyer and Grayson N. Holmbeck, Loyola University Chicago.
13. The measurement of condom use self-efficacy beliefs and the prediction of condom use intentions in adolescents - J.L. Fisher, D.P. MacKinnon, and M.J. Barrera, Mayo Clinic.
14. Current issues in pediatric psychology practice in primary care - Mary Evers-Szostak and M.E. Voegler, Duke University Health System.
15. Children's patterns of coping with pediatric compared to other types of life stress - Deidre Donaldson, Michael Danovsky, Mitchell Prinstein, and Anthony Spirito, Rhode Island Hospital/Brown University School of Medicine.
16. Pediatric chronic fatigue as a chronic illness: A case control comparison of children with chronic fatigue and children with juvenile rheumatoid arthritis - Bryan D. Carter, University of Louisville School of Medicine, William G. Kronenberger, Indiana University School of Medicine, Joseph F. Edwards, Kenneth Schikler, Jim Dalton, Gary S. Marshall, Helmut R. Roehrig, University of Louisville School of Medicine.
17. The impact of child neuropsychological evaluations on parental perceptions and satisfaction - Tammy J. Brazeal and Janet E. Farmer.
18. What do measures of "Visual-motor integration" measure? - Wayne Adams, Rochelle Glidden, David Sheslow, DuPont Hospital for Children.
19. Normative data for the Eyberg Child Behavior Inventory in pediatric sample - Andrew Colvin, Sheila M. Eyberg, and Christina D. Adams, University of Florida.
20. Toward conceptual and statistical clarity in the study of mediators and moderators: Examples from the pediatric psychology literature - Grayson N. Holmbeck, Loyola University of Chicago.
21. Behavioral and emotional problems in children with obstructive sleep apnea - E. Wayne Holden, Kathy Currey, and Melissa Deichmann, University of Maryland School of Medicine.
22. The Oklahoma Infants Assistance Program: A model for intervention with high-risk infants - Martin Ward, Steven J. Ondersma, Robin H. Gurwitch, Barbara Bonner, and Paul Toubas, The Children's Hospital of Oklahoma.
23. Improving the psychological health and well-being of learning disabled children - Lani M. Van Dusen, Utah State University.
24. Evaluation of a procedural pain management intervention for HIV-infected children - Wendy B. Schuman, Nancy J. Peterson, Kristen Holtz-Garcia, and Tamara A. Rakusan, Children's National Medical Center.

25. Aerophagia mimicking intestinal pseudo-obstruction: Brief treatment with hypnotherapy and behavioral techniques - Barbara Rzepski, Connecticut Children's Medical Center
26. Family-based treatment for sickle cell disease pain: Two-year follow-up - Scott W. Powers and Karen A. Kalinyak, University of Cincinnati College of Medicine.
27. Short-term, group behavioral treatment for encopresis: Parent & child predictors of outcome - Lisa C. Oipari, Lori J. Stark, D. Rasile, D. Donaldson, M. Danovsky, A. DelSanto, Brown University School of Medicine/Rhode Island Hospital.
28. Self-toileting: A significant variable in resolving functional encopresis (fecal soiling) in children - Joan T. Magill and Martin H. Young, University of Massachusetts.
29. A survey of the reasons parents give for non-participation in the diabetes prevention trial - type 1 (DPT-1) - Nicholas Jospe and Dan Edwards, University Rochester School of Medicine and Dentistry.
30. The effectiveness of team approaches for treating children with disabilities - Sheri Berman, A. Cate Miller, Carol Rosen, Stephen Bicchieri, New York University Medical Center.
31. Family burden and distress during the initial year following traumatic injury: A prospective investigation - Shari L. Wade, H. Gerry Taylor, Dennis Drotar, Terry Stancin, and Keith O. Yeates.
32. Preschoolers presenting for treatment of obesity: Child and family characteristics - David Sheslow, Elizabeth de Lancey, and Sandra Hassink, The DuPont Hospital for Children.
33. Cognitive competence and behavioral-emotional adjustment during the early school years for preterm born children: The role of the mother-child relationship - Lynda M. Richtsmeier, Susan P. Keane, Marian Earls, University of Rochester Medical Center.
34. The impact of family system changes on the success of a behavioral intervention - Lisa C. Oipari, Leslie E. Spieth, Katherine J. Harrison, and Lori J. Stark, Brown University School of Medicine/Rhode Island Hospital.
35. Parental differential treatment in the context of childhood chronic illness: Associations with children's sibling relationships, adjustment, and social networks - Lisa C. Oipari, Alexandra L. Quittner, Samya Nasr, Brown University School of Medicine, Indiana University, Michigan School of Medicine.
36. The influence of maternal stress resistance and family functioning on depression in children with cancer - Ashley B. Noojin, Bryan J. Gros, David L. Causey, Salvatore Bertolone, and Bryan D. Carter, University of Louisville Medical Center.
37. Stress, self-appraised problem-solving ability, coping, and adjustment in mothers of children with physical disabilities - Ashley B. Noojin and Jan L. Wallander, University of Alabama at Birmingham.

38. Maternal grief reactions to children's birth defects: Factors that influence grief resolution and relations to child attachment - John McCaskill, Douglas Barnett, Kelli Hill-Hunt, Christine Butler, Melissa Kaplan-Estrin, Jill Kofender, Melissa Clements, and Heather Crucial, Wayne State University.
39. Parental overprotection and autonomy in pre-adolescents with spina bifida - Sharon Z. Johnson, Grayson N. Holmbeck, Karen Wills, Loyola University Chicago.
40. Psychological and family characteristics of adolescents with vocal cord dysfunction - Leslie Gavin, Marianne Wamboldt, and Frederick Wamboldt, National Jewish Medical and Research Center.
41. Behavioral adjustment and parent-child interactions among preschool children with leukemia - Deborah A. Ellis and Shauna Tindall, Wayne State University School of Medicine.
42. Multidimensional assessment of parent and child coping patterns for managing cancer-related stress - Daniel J. Coletti, Schneider Children's Hospital, William E. MacLean, Jr., University of Wyoming, and Gungor Karayalcin, Schneider Children's Hospital.
43. Measuring psychosocial gains of medically fragile children in foster care as part of a comprehensive evaluation system - Karen S. Budd and Cary S. Chugh, DePaul University, Wayne Stelk, Melinda Foukal, Carol Murphy, and Robert Longo, Illinois MENTOR.
44. Maternal psychological functioning and home intervention among children with failure to thrive: Follow-up at age 4 - Maureen M. Black, Jacqueline J. Hutcheson, Michelle Talley, Howard Dubowitz, Julie B. Howard, Raymond H. Starr, Jr., and B. Simone Thompson, University of Maryland School of Medicine.
45. Mother's beliefs as the basis for determining children's appropriate supervision: The role of gender, child age, and environmental risk - Richard Boles and Lizette Peterson, University of Missouri-Columbia.
46. Chronic pain and depression in children - Monica L. Corbitt, Lynn S. Walker, and Craig S. Smith, Vanderbilt University.
47. Children's strategies for coping with chronic or recurrent pain: Development and validation of the pain response inventory - Lynn S. Walker, Craig A. Smith, Judy Garber, and Deborah A. Van Slyke, Vanderbilt University School of Medicine.
48. Results of a school reentry program for chronically ill children - Frances Worchel-Prevatt, Rob Heffer, and Nancy Baker, Texas A&M University.
49. Parental attributions regarding behavior of young children with communication disorders - Susan L. Hepburn, Wendy L. Stone, Lynn S. Walker, and Jessica W. Guite.

POSTER PRESENTATIONS

FRIDAY APRIL 25 - 11:30 AM - 1:30 PM

(Please note: The number beside each entry indicates the poster board number for the presentation.)

1. The crying infant - Birgitta Wikander, Karolinska Institute.
2. Attention deficit hyperactivity disorder in parents: Implications on the child and family - Jan G. Walker and Susan Pisterman, Children's Hospital of Eastern Ontario.
3. Development of an empirically based role-play measure to assess the problems and coping strategies of parents of adolescents with CF - Laura Wager and Alexandra Quittner, Indiana University.
4. Decisions to forgo life-support in a pediatric intensive care unit: Maternal perceptions of subsequent family functioning - E. Votta, D. Simm, B. Mitchell, T. Frewen, C. Maan, B. Magwood, M. Rabinowitz, Children's Hospital of Western Ontario.
5. Self-disclosure about IDDM as a mediator of the association between general and diabetes-specific peer processes in adolescents with IDDM - Ann M. Thomas, Bentley College.
6. Pediatric psychology training: A family systems approach - Kathleen W. Seitz, Elizabeth A. Seagull, Judith Brady, Michigan State University.
7. Mothers living with HIV: Patterns of adjustment and disclosure - Laura B. Murphy, Katalin Koranyi, Shelley Whited, Linda Crim, and D. Todd Bettler, Otterbein College.
8. Insulin dependent diabetes mellitus, eating disturbances, and family functioning - Sherry I. Maharaj, Gary Rodin, Marion Olmsted, and Denis Daneman, York University.
9. Child health, family functioning and behavioral/emotional problems - Hans M. Koot, Erasmus University and Sophia Children's Hospital, Rotterdam.
10. Family asthma management system scale: A measurement tool - Mary D. Klinnert, Elizabeth L. McQuaid, and Leslie A. Gavin, National Jewish Medical and Research Center.
11. Maternal, paternal, and marital functioning in families of pre-adolescents with spina bifida - Grayson N. Holmbeck, Lorin Gorey-Ferguson, Tracy Hudson, Trina Seefeldt, Wendy Shapera, Tamatha Turner, Jennifer Uhler, Loyola University of Chicago.
12. Assessing the clinical significance of family therapy with chronically ill youths - Michael A. Harris, Peggy Greco, Tim Wysocki, Jeanne Bubb, and Neil White, Washington University School of Medicine.

13. Child temperament and mothering self-efficacy: An interactional model of the etiology of nonorganic failure to thrive - Michele Ebright and Kristi Alexander, United States International University.
14. Child coping, parent behavior and functional status in children with juvenile rheumatoid arthritis - Mary Bolger, Children's Hospital of Wisconsin/Medical College of Wisconsin, Molly M. Garwood, University of Notre Dame, Judyann Olson, and Jay Nocton, Children's Hospital of Wisconsin/Medical College of Wisconsin.
15. Effect of psychological preparation on reducing behavioral distress and morbidity in children undergoing endoscopy - Martin H. Young and Alan D. Schnee, University of Massachusetts.
16. Adolescents with psychiatric disorders and their risk for HIV - Anne C. Stermook, Children's Health Care, Michael B. Danovsky, Valley Children's Hospital, and Larry K. Brown, Rhode Island Hospital/Brown University School of Medicine.
17. Treating anorexia nervosa in a pediatric setting: Program description and outcome documentation - Thomas R. Linscheid and Anastasia Canacci, Ohio State University and Children's Hospital.
18. Behavioral treatment of school children and adolescents with recurrent headaches - B. Larsson, Uppsala University.
19. Decreasing distress in pediatric immunizations: A video-training intervention for parents - Dawn Koontz, Kathleen L. Lemanek, Catherine Hood, The University of Kansas, Robyn Karlin, Martha Barnard, Ruth Heaton, The University of Kansas Medical Center.
20. Assessing instructional style among mothers at risk for child maltreatment - George Tremblay, Michelle Nainys, and Lizette Peterson, University of Missouri-Columbia.
21. Emotion regulation in sexually-maltreated girls - Kimberly Shipman, Oklahoma Health Sciences Center, Susan Penza, Janice Zeman, University of Maine, Kelly Champion, Oklahoma Health Sciences Center, Joel Gold, University of Maine.
22. Children's physical risk-taking and expectations about injury consequences - Richard Potts, Susan Himes, and Jamie Phillips, Oklahoma State University.
23. The cumulative effect of neglect and failure to thrive on cognitive functioning - Laura M. Mackner, Raymond H. Starr, Jr., and Maureen M. Black, University of Maryland Baltimore County.
24. Community based follow up of violently assaulted adolescents: Self-reported and clinician rated emotional functioning - W. Hobart Davies, Children's Hospital of Wisconsin, James K. Giese, Marquette University, Ecclesiastes Allen, Liz Bohne, Family Service of Milwaukee, Alice D. Calhoun, Medical College of Wisconsin, Jenifer Wincek, Children's Hospital of Wisconsin.

25. AIDS knowledge among mothers affected by HIV - Shelley Whited, Laura Bennett-Murphy, Katalin Koranyi, Laura Gwilliam, and Jessica Shultz, Otterbein College.
26. Intelligence testing of hospitalized, minority, inner-city children and adolescents - Stephen L. Soffer and Patrick W. McGuffin, University of Maryland at Baltimore and Allegheny University.
27. Initial medical condition and family demographics predicts long-term diabetic control - Jennifer S. Pendley, Sandra S. Duis, Amy E. Haugh Dodds, and Connie Swenson, duPont Hospital for Children.
28. Repression and physiological reactivity among children and asthma - Jack H. Nassau, Elizabeth L. McQuaid, and Gregory K. Fritz, Rhode Island Hospital/Brown University School of Medicine.
29. Identifying predictors of metabolic control in adolescents with diabetes - Beth Mitchell, Cheryl Fernandes, and Grace Bradish, London Health Sciences Centre.
30. Assessment of mathematical skills in low-achieving and learning disabled children - Donald J. Mabbott, Hospital for Sick Children.
31. The capacity for reflection: How do ADHD vs. non ADHD children and young adults differ? - Lois R. Kugler and Peter N. Kugler, Radford University.
32. Developmental and behavioral screening following neonatal intensive care - Hans M. Koot, Nynke Weisglas-Kuperus, Kirsten Hoogerheide, and Annemieke Kulk - Erasmus University and Sophia Children's Hospital Rotterdam.
33. Psychosocial adaptation to childhood illness - Bonnie J. Floyd, Yeshiva University.
34. Attachment theory as a vehicle for understanding family adjustment to chronic illness - Samantha M. Delagarza and Robert W. Heffer, Texas A&M University.
35. "Get some sympathy or get a new job": The experience of dismissed pain reports in adolescents with chronic pain - W. Hobart Davies, Julia Uihlein, and Deb Olson, Children's Hospital of Wisconsin and Medical College of Wisconsin.
36. Health locus of control in children: Age, gender, and ethnicity group differences - Debra A. Cornell, Diane M. McKinney, Wendy L. Hernandez, Erika Ybanez, and Vanessa L. Malcarne, San Diego State University.
37. AIDS orphans: The psychological adjustment of children with multiple family members with a terminal illness - Teresa L. Collins-Jones, Vicki J. Tepper, University of Maryland School of Medicine, Terry M. Pace, University of Oklahoma, Mark B. McKenzie, University of Maryland School of Medicine.

38. The role of food preferences in the development of pediatric feeding disorders - Cary S. Chugh, Chris Croner, Rhonda Frisbee, and Karen S. Budd, DePaul University
39. Self-esteem in children with ADHD, and the role of disorder characteristics, psychosocial variables, and medication use - Regina Bussing and Amy R. Perwien, University of Florida, Bonnie T. Zima, University of California, Los Angeles, CA.
40. Managed care and pediatric psychologists: Implications for training - Kristi Alexander, United States International University.
41. Quality of life in IDDM: Adolescent and peer perceptions - Amy R. Perwien, Suzanne B. Johnson, and Janet H. Silverstein, University of Florida.
42. Situational, respondent, and questionnaire-specific effects on the measurement of coping behaviors of adolescents with cystic fibrosis - William Kronenberger, Indiana University School of Medicine, Christine Latta, University of Louisville, Bryan Carter, University of Louisville School of Medicine.
43. Discriminant validity of the *internalizing symptoms scale for children* - Susan L. Crowley and Kenneth W. Merrell, Utah State University.
44. Psychological impact of HIV/AIDS on children and caregivers - Pamela J. Bachanas, Emory University School of Medicine, Kristin A. Kullgren, Katherine B. Suzman, S. Blake Lanier, Tonya D. Lauf, Georgia State University, Christopher Hummel, Georgia School of Professional Psychology, Candice Baugh, David Reed, Karyn Davis, Georgia State University.
45. Mother's perceptions of the causes and remedies for their children's chronic abdominal pain - Robyn E. Lewis, Maura W. Duke, and Lynn S. Walker.
46. Program evaluation: A new frontier for pediatric psychologists - Sylvie Naar-King and Patricia T. Siegel, Wayne State University.
47. The development and validation of the children's pain beliefs questionnaire - Deborah A. Van Slyke, Craig A. Smith, Lynn S. Walker, and Judy Garber, Vanderbilt University.
48. Parental role strain, social support, and adjustment to sickle cell syndromes in children - Carolyn E. Ievers, Emory University School of Medicine, Ronald T. Brown, Emory University School of Medicine and Rollins School of Public Health.
49. Factors affecting adjustment among low income children with asthma - Marianne P. Celano and Pamela J. Bachanas, Emory University School of Medicine.

