

The 8th  
Florida Conference on  
Child Health Psychology

G a i n e s v i l l e , F l o r i d a

A p r i l 2 5 - 2 8 , 2 0 0 1



# Eighth Florida Conference on Child Health Psychology

Welcome

Gainesville, Florida  
April 25 –28, 2001

We would like to welcome you to the Eighth Florida Conference on Child Health Psychology, hosted by the Department of Clinical & Health Psychology at the University of Florida. Our goal is to bring you cutting edge research in areas that are important to our field, with the hope that this information will be useful to you in your own research and clinical endeavors. We also want to continue the tradition of mixing good science with lots of social time and fun! Below are a few notes about the conference.

First, the paper sessions will begin each morning at 8:30 AM (9:00 AM on Saturday). Each paper session will be preceded by Discussion Hours at 7:30 AM (8:00 AM on Saturday) on topics of special interest (Transitions to Careers, Internship Applications, International Pediatric Psychology, Applications of Telehealth). Please join us for a complete Continental Breakfast served prior to the Discussion Hours and morning paper sessions. We will also be serving lunch for all registrants during the Poster Sessions scheduled during the noon hours on Thursday and Friday.

Second, we have scheduled several social activities to add to your enjoyment of the conference and facilitate participants getting to know one another. These activities include a reception and poster session on Wednesday, April 25<sup>th</sup> (7:00 PM to 10:00 PM) at the University of Florida DoubleTree Conference Center and Hotel. On Thursday, April 26, there will be a dinner reception at the Florida Museum of Natural History, immediately following our Frontiers in Pediatric Psychology Address. Finally, on Friday, April 27, there will be a picnic at the beautiful Kanapaha Botanical Gardens (transportation will be provided by bus).

Third, for those of you wishing to obtain Continuing Education credit, CE credits will be available for each of the 5 paper sessions and the Frontiers Address. To receive CE credit for a particular session, please sign an attendance sheet for that session at the Continuing Education desk and pick up an evaluation form at the beginning of the session. Return the completed evaluation form at the end of the session to obtain a CE certificate for that session.

We hope each of you will find the conference informative and exciting, and will leave with new colleagues and friends with whom you can stay in touch. If you have any questions during the conference, please ask any member of the Conference Planning Committee. These individuals can be identified by the small alligator attached to their name tags.

Thank you for your continued support of this conference!

Alexandra L. Quittner  
Co-Chair, Conference Planning Committee



# Eighth Florida Conference on Child Health Psychology

The continued success of the Florida Conferences on Child Health Psychology depends largely on the financial contributions of various organizations. The Conference has a history of providing a scientific program of outstanding quality as well as several social events that provide opportunities for more informal interactions among participants. Such activities would not be possible without financial support. The Program Committee would like to thank and acknowledge the sponsors and contributors listed below.

**University of Florida Sponsors:** Department of Clinical and Health Psychology, Center for Pediatric Psychology and Family Studies, and the College of Health Professions.

**The American Psychological Association Sponsors:** The Division of Rehabilitation Psychology (Division 22), The Division of Child, Youth, and Family Services (Division 37), The Division of Health Psychology (Division 38), The Society of Pediatric Psychology (Division 54).

**Contributors:** Genentech Inc., North Central Florida Chapter of the Florida Psychological Association, Psychological Assessment Resources Inc., Pfizer Inc., Shire Pharmaceuticals, and Westmed Inc.





## Acknowledgements

The names of those faculty and students who served on various conference-related committees and who did the work necessary to make the conference a success are listed below. In addition, the administrative and secretarial support and overall helpfulness of Cina Thomas and Jim Ferrer (Department of Clinical and Health Psychology) are gratefully acknowledged. Lastly, special thanks to Michael Bassett, who so artfully designed the cover for the program.

## Conference Planning Committee

### CONFERENCE PLANNING COMMITTEE

Alexandra Quittner and Suzanne Bennett Johnson, *Co-Chairs*; Dawn Newman, Steve Boggs, Sheila Eyberg, Gary Geffken, Stacey Hoffman, Jim Johnson, Amy Perwien, Anna Tobia, Amy Baughcum, Stacy Carmichael, Caroline Elder Danda, Korey Hood, Chris Houck, Kim Kirkpatrick Justice, Lisa Meltzer, Avani Modi

### PROGRAM COMMITTEE

Alexandra Quittner and Suzanne Bennett Johnson, *Co-Chairs*; Amy Baughcum, Caroline Elder Danda, Korey Hood, Chris Houck, Kim Kirkpatrick Justice, Avani Modi

### SOCIAL/RECREATION COMMITTEE

Suzanne Bennett Johnson, Amy Perwien, and Marika Spevack, *Co-Chairs*; Chris Loftis, Korey Hood, Stacy Carmichael, Chris Houck

### LOCAL ARRANGEMENTS COMMITTEE

Steve Boggs, *Chair*; Lisa Meltzer, Melissa Davis, Shelley Heaton, Cathy Hood, Julie Owens, Fontina Rashid

### CONTINUING EDUCATION & EVALUATION

Sheila Eyberg, *Chair*; Caroline Elder Danda, Jane Querido, Brandy Werba

### BOOK EXHIBITS

James Johnson, *Chair*; Amy Baughcum and Kim Kirkpatrick Justice

### PUBLIC RELATIONS

Gary Geffken, *Chair*; Sue Craven, Stacey Hoffman, Anna Tobia, Russell Bauer, Peggy Bessinger, Stacy Carmichael, Caroline Elder Danda, Sarah Lageman, Avani Modi



## Wednesday April 25, 2001

7:00 p.m. – 10:00 p.m.  
Century Ballroom B & C

Welcome Reception

---

### POSTER SESSION I (1-56)

Cancer, general mental health, pain, stress and coping, sibling adjustment, sickle cell disease, transplant  
*Poster listings on pages 13-16*

---

## Thursday, April 26, 2001

7:00 a.m. -8:30 a.m.  
Conference Center Lobby

Continental Breakfast



7:30 a.m. - 8:30 a.m.  
Dogwood

Discussion Hour

***Bridging the Gap:  
Navigating the Transition from Graduate Training to Early  
Careerhood***

Chairs

Amy R. Perwien, Ph.D., University of Florida  
Brandon G. Briery, Ph.D., University of Miami

Research Focus

Kathleen Burklow, Ph.D., Children's Hospital Medical Center of Cincinnati  
Lindsey Cohen, Ph.D., West Virginia University  
Alexandra Quittner, Ph.D., University of Florida

Research/Clinical Focus

Paola Conte, Ph.D., Hackensack University Medical Center  
David Elkin, Ph.D., University of Mississippi Medical Center  
Mike Rapoff, Ph.D., University of Kansas Medical Center  
Randi Streisand, Ph.D., Children's National Medical Center  
Lynn Walker, Ph.D., Vanderbilt University

Clinical Focus

Helmut Roehrig, Ph.D., Children's Hospital Medical Center of Cincinnati  
Lisa Schilling, Ph.D., Nemours Children's Clinic, Jacksonville



**Thursday, April 26, 2001**

**8:30 a.m. - 11:30 a.m.  
Century Ballroom A**

**Welcome**

**WELCOME ADDRESS & INTRODUCTIONS:**

*Alexandra Quittner, Ph.D.* - Department of Clinical and Health Psychology,  
University of Florida

**Paper Session 1**

**ATTENTION DEFICIT HYPERACTIVITY DISORDER**

**TOPIC CHAIR:**

✓ *William Pelham, Ph.D., State University of New York at Buffalo*  
State of the Art Treatment for ADHD: Recent Pharmacological, Psychosocial  
and Combined Treatment Studies

**PAPER PRESENTATIONS:**

✓ *J.S. Owens, B. Hoza, Purdue University*  
Conditional Probabilities of ADHD Symptoms Predicting ADHD Subtypes

✓ *W.S. Freeman & C. Johnston, Medical University of South Carolina*  
Caregivers' Beliefs Regarding the Causes Of and Treatments for ADHD  
and Child Conduct Problems



**Coffee Break**

✓ *K. Tercyak & J. Audrain, Georgetown University Medical Center*  
ADHD Symptomatology, Cigarette Smoking, and Evidence for Common  
Bio-Behavioral Mechanisms of Association

✓ *M. Manos, E. Short, & R. Findling, The Cleveland Clinic Foundation*  
Differential Dose Response in Psychostimulant Treatment of  
Children with Attention Deficit Hyperactivity Disorder

✓ *D. Meichenbaum, E. Gnagy, L. Flammer, B. Molin, & W. Pelham, University at Buffalo*

Why Stop Success? Exploration of Long-term Use of Medication  
in a Clinical ADHD Sample from Childhood Through Young Adulthood



**Thursday, April 26, 2001**

**11:30 a.m. - 1:30 p.m.**  
**Century Ballroom B & C**

**Lunch**

---

**POSTER SESSION II (1-66)**

ADHD, asthma, cystic fibrosis, HIV, neuropsychology assessment,  
QOL, renal disease, risky behaviors, spina bifida, traumatic brain  
injury

*Poster listings on pages 17-21*

---

**1:30 p.m. - 4:30 p.m.**  
**Century Ballroom A**

**Paper Session 2**

***SERVICE DELIVERY IN CHILD HEALTH PSYCHOLOGY***

**TOPIC CHAIR:**

✓ *Michael Roberts, Ph.D. , University of Kansas*  
Service Delivery Issues in Child Health Psychology  
Michael C. Roberts, Keri J. Brown, and Richard W. Puddy

**PAPER PRESENTATIONS:**

✓ *Beth Bryant*  
N. Bryant, G. Evans, & S. Bennett Johnson, duPont Hospital for Children &  
University of Florida  
Optimizing Service Delivery to Medical Foster Families Through Needs  
Assessment

✓ *Janet Farmer*  
J. Farmer, W. Marien, L. Frasier, & A. Sherman, University of Missouri-Columbia  
School of Medicine  
Primary Care Partnerships: Building Service Delivery Systems for  
Children with Special Health Care Needs



**Coffee Break**

K. Budd, DePaul University  
The Role of Child Health Psychologists in Child Protection Cases:  
Providing Competent Services in a Forensic Context



**Thursday, April 26, 2001**

**SERVICE DELIVERY IN CHILD HEALTH PSYCHOLOGY**

*Deborah Ellis*  
✓ D. Ellis, S. Naar-King, M. Frey, & N. Greger, Wayne State University  
Testing Multisystemic Therapy to Improve Regimen Adherence and  
Metabolic Control in Urban Youth with IDDM

*Lisa Meltzer*  
✓ L. Meltzer & S. Bennett Johnson, University of Florida  
Services for Mothers of Children with Chronic Illnesses: Summer Camp as  
a Model of Respite Care

4:30 p.m.  
Conference Center Lobby



Snack Break

5:00 p.m. - 6:00 p.m.  
Century Ballroom A

Invited Address

**Frontiers in Pediatric Psychology Invited Address:**

*Richard McCarty, Ph.D.*  
Executive Director for Science,  
American Psychological Association

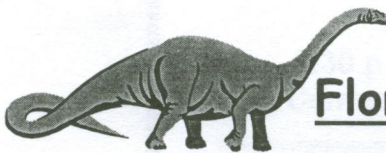
The Citizen Scientist-Practitioner: In Service to the Nation

7:00 p.m. – 9:00 p.m.

Reception & Dinner

*\*Walking groups leave from hotel at 6:30 p.m.*

An Evening at the  
Florida Museum of Natural History



University of Florida  
Powell Hall SW 34<sup>th</sup> Street & Hull Road



**Friday, April 27, 2001**

**7:00 a.m. - 8:30 a.m.**  
**Conference Center Lobby**

**Continental Breakfast**



**7:30 a.m. - 8:30 a.m.**  
**Dogwood**

**Discussion Hours**

***Helpful Hints for the Process of Applying For Pediatric Internships***

Chair

Karen J. Bearman, University of Miami

Panelists

Catherine Grus, Ph.D., Training Director, Mailman Center for Child Development

Katie Cant, Intern, Mailman Center for Child Development

Caroline Elder Danda, University of Florida

Merrit Jensen, University of Miami

Jodi Kamps, University of Kansas

Kelly McGraw, Spaulding University

**Live Oak**

***Interest Group in  
International Pediatric Psychology***

Chair

Maureen Black, Ph.D., University of Maryland





**Friday, April 27, 2001**

**8:30 a.m. - 11:30 a.m.**  
**Century Ballroom A**

**Paper Session 3**

**TECHNOLOGY IN ASSESSMENT AND TREATMENT**

**TOPIC CHAIR:**

*Cynthia Rand, Ph.D., Johns Hopkins University*  
Electronic Data Collection: Pearls and Pitfalls

**PAPER PRESENTATIONS**

*J. Kamps, M. Rapoff, N. Olson, R. Weiner, J. Cheavens, & L. Schroeder,*  
*University of Kansas*  
Assessing and Enhancing Adherence to Inhaled Corticosteroids in  
Children with Asthma

*A. Quittner, D. Drotar, C. Landis, N. Slocum, & A. Buu, University of Florida*  
Measuring Adherence to Treatment in Adolescents with Cystic Fibrosis:  
Pros and Cons of Electronic Monitors for Data Collection



**Coffee Break**

*Y. Markov, A. Hazzard, M. Celano, & M. Collins, Georgia State University*  
Effects of Starbright World on Knowledge, Social Support, and Coping in  
Hospitalized Children with Sickle Cell Disease and Asthma

*R. Glueckauf, J. Loomis, P. Dages, S. Fritz, E. Ecklund-Johnson, H. Liss, H.*  
*Benfield, & T. Lihath, University of Florida*  
Family Videosystem Counseling for Rural Teenagers with Seizure  
Disorders: Integration of Phase 1 and 2 Findings

*D. Harper, University of Iowa, College of Medicine*  
Telehealth in Rural Iowa: Consultation and Treatment for Children and  
Youth with Disabilities

**11:30 a.m. - 1:30 p.m.**  
**Conference Center Patio**

**Lunch**

---

**POSTER SESSION III (1-65)**

Diabetes, feeding, obesity, risky behaviors, service delivery,  
technology *Poster listings on pages 22-26*

---



**Friday, April 27, 2001**

**1:30 p.m. - 3:30 p.m.**  
**Century Ballroom A**

**Paper Session 4**

**TRAUMATIC BRAIN INJURY**

**TOPIC CHAIR:**

*Seth Warchausky, Ph.D., University of Michigan School of Medicine*  
Keeping Psychology in the Neuropsychology of Pediatric Traumatic Brain Injury

**PAPER PRESENTATIONS:**

*J. Donders, Mary Free Bed Hospital*  
Empirically Validated Neuropsychological Assessment of Children with Traumatic Brain Injury

*H.G Taylor, & K.O. Yeates, Case Western Reserve University*  
The Nature and Correlates of Longitudinal Change After Traumatic Brain Injury in Children

*S. Warschausky, P. Dixon, A.Argento, & E. Hurvitz, University of Michigan*  
Neuropsychological Status and Social Problem-Solving Skills as Predictors of Social Functioning of Children with Congenital or Acquired Brain Dysfunction

**4:30 p.m.**  
**Conference Center Lobby**

**Snack Break**

**4:30 p.m. - 7:30 p.m.**



**Conference Activity**

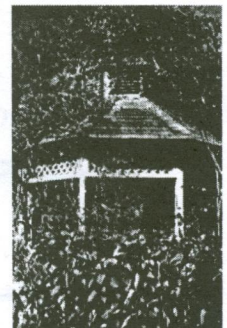


***\*Buses depart at 4:00 pm and will return at 7:30 p.m.***



**Picnic at**  
**Kanapaha Botanical Gardens**

**4700 S.W. 58th Drive**





**Saturday, April 28, 2001**

**7:30 a.m. -9:00 a.m.**  
**Conference Center Lobby**

**Continental Breakfast**



**8:00 a.m. – 9:00 a.m.**  
**Hawthorne**

**Discussion Hour**

*Telehealth Consultation for Children and Youth with Special Needs*

Chair

Dennis Harper, Ph.D., University of Iowa College of Medicine

Panelists

Janet Farmer, Ph.D., University of Missouri

Steven Sulzbacher, Ph.D., University of Washington

Robert Glueckauf, Ph.D., University of Florida

**9:00 a.m. – 12:00 p.m.**  
**Century Ballroom A**

**Paper Session 5**

### **CHILDHOOD OBESITY**

#### **TOPIC CHAIR:**

*Leonard Epstein, Ph.D., State University of New York at Buffalo, Pediatrics*  
Overview of Long-Term Effects of Pediatric Obesity Treatment

#### **PAPER PRESENTATIONS:**

*M. Black, M.A. Kerr, H. Dubowitz, & R.H. Starr, University of Maryland Baltimore County*

Obesity at Age 8 Among Low-Income Children with a History of Failure-to-Thrive

*K. Kirkpatrick Justice, S. Bennett Johnson, J. Valenzuela, B. Moulder, & J. Silverstein, University of Florida*

Predicting Body Mass and Disturbed Eating Attitudes in Adolescents with Type I Diabetes



**Coffee Break**



**Saturday, April 28, 2001**

**CHILDHOOD OBESITY**

A. Patino, C. Luna-Pinto, & A. Delamater, *University of Miami*  
Hispanic Mothers' Perceptions of Obesity in Their Children

E. Jelalian, R. Mehlenbeck, C. Chambers, & J. Finch, *Brown Medical School/Rhode Island Hospital*  
The Role of Peer-Based Intervention in the Psychosocial Functioning of Overweight Adolescents

M. Zeller, S. Sullivan, B. Huth, D. Kirk, S. Daniels, U. Kotagal, J. Bucuvalas, & T. Byczkowski, *Children's Hospital Medical Center Cincinnati*  
HealthWorks! Pediatric Weight Management Program: It Works, But For Whom?

Thanks for Coming!  
See you in 2003!



**Wednesday, April 25, 2001**

**POSTER PRESENTATIONS**

**7:00 p.m. – 9:00 p.m.**

**Dogwood, Live Oak, Cypress, Conference Center Lobby**

*The number beside each entry indicates the poster board number for the presentation.*

1. A Social Skills Training Intervention for Children Treated for Brain Tumors--Barakat, L., Hetzke, J., Foley, B., Carey, M., Gyato, K., & Phillips, P., Drexel University
2. Relation Between Child Observable Distress Behavior and Physiological Reactions During Aversive Pediatric Cancer Procedures--Benhorin, S., Jones, K., Dahlquist, L., & Boscoe, J., Quintavalle, University of Maryland, Baltimore County
3. Marital Dissatisfaction in Parents of Pediatric Oncology Patients--Boyd, M., Mullins, L., Huszti, H., Chaney, J., & Page, M., Oklahoma State University
4. Role of Family Functioning and Repressive Adaption in Children with Cancer--Fuemmeler, B.F., Brown, R.T., Williams, L.L., Limehouse, A., & Barredo, J., Medical University of South Carolina
5. Psychosocial Assessment of Pediatric Long-Term Cancer Survivors--Johnson, C., Huszti, H., Greeberg, D., Elkin, D., Parkhurst, J., The University of Oklahoma Health Sciences Center
6. Examining Observed Distress in Shy Pediatric Cancer Patients--Jones, K., Dahlquist, L., & Benhorin, S., University of Maryland, Baltimore County
7. Child-Rearing Behaviors of Parents of Children with Cancer: Associations to Child Somatic Distress and Medical Compliance--Long, A., Mayes, S., Steele, R., & Phipps, S., University of Kansas
8. The Impact of Maternal Negative Affect on Child Psychological Functioning in Children with Cancer: A Longitudinal Study--Switkin, M.C., Dahlquist, L.M., Czyzewski, D.I., Vannorsdall, T., Forsy, K.L., & Sheets, R.L., University of Maryland Baltimore County
9. The Associations of Thought Suppression with Posttraumatic Stress and General Distress Among Parents of Children Surviving Cancer--VanPelt, J., Fuemmeler, B., Mullins, L., Dies, A., Huszti, H., & Parkhurst, J., Oklahoma State University
10. The Treatment Effects of Behavioral Intervention Vs. Standard of Care at Increasing Calcium Intake in Children with Juvenile Rheumatoid Arthritis--Stark, L.J., McGrath, A.M., Mackner, L.M., VanBuren, J., Fischer, B., Deeks, C., Burns, M.B., Taylor, J., Heubi, J., & Lovell, D.J., Children's Hospital Medical Center Cincinnati
11. Functional Disability in Children with Encopresis: The Role of Emotional Difficulties and Behavior Problems--Banez, G.A., Bellow, S., & Steffen, R., The Cleveland Clinic
12. Parental Stress in Autism: A Meta-Analysis--Benore, E., Morrow, J., Denholm, K., O'Brien, W., Bowling Green State University
13. The Relationship Between Parental History of Smoking Behavior and Children's Perceived Vulnerability to Smoking-Related Health Risks--Boergers, J., Stanton, C., Kazura, A., & Niaura, R., Brown Medical School/Rhode Island Hospital



14. The Physiological and Behavioral Impact of Maternal Depression Upon the Developing Child--Boeving, C.A. & Graves, K.D., Virginia Tech
15. Causal Attributions, Depression, and Academic Achievement--Boyd, B., Shaw, S., Robertson, J., & Chaney, J., Oklahoma State University
16. School Teachers' Knowledge and Experiences with Childhood Chronic Illness--Cortina, S., Clay, D., Harper, D., Cocco, K., Kanz, J., & Drotar, D., University of Iowa
17. The Multidimensional Relationship Between Self-Concept and Internalizing Symptoms--Dowd, S. & Crowley, S., Utah State University
18. Internet Health Information Searches Impact Health Outcomes in Late Adolescents--Flynn, A. & Frauenglass, S., Northern Illinois University
19. Religion and Physical Health in Children--Frank, N. & Kendal, S., George Washington University
20. Clinical and Ethical Issues in Assisted Reproduction--Gross, J.N., Clay, D., Harper, D., & Stockman, A., University of Iowa
21. Maternal and Child Uncertainty and Child Psychological Distress: A Cross-Illness Comparison--Hoff, A., Mullins, L., Chaney, J., Hartman, V., & Hommel, K., Oklahoma State University
22. Factors Related to Adolescent Suicide Attempts--Liss, H.J., Phares, V., & Kangas, J., University of Florida/University of South Florida
23. Chronicity of Self-Reported Depressive Symptoms and Mother-Reported Psychosocial Competence of African American Children: Replication and Extension of Longitudinal Relationships--Maikranz, J., Steele, R., Forehand, R., Armistead, L., Morse, E., & Simon Morse, P., University of Kansas
24. Group Parent-Child Interaction Therapy with a Mother in Substance Abuse Treatment--Payne, H., Brestan, E., Simpson, S., Ondersma, S., Gattis, S., Garner, K., Goodman, M., Parker, S., & Smith, A., Auburn University
25. Adaptations of the Denver II Scoring System to Assess the Developmental Status of Children with Medically Complex Conditions--Ware, C., Faust Sloss, C., Chugh, C., & Budd, K., DePaul University
26. Lessons From The Lab: Maternal Influences In Pediatric Pain--Chambers, C.T., Craig, K.D., & Bennett, S.M., Brown University School of Medicine
27. The Influences of Appraisals on Anticipatory Anxiety, Procedural Distress, and Post-Procedural Evaluation in Children Undergoing Esophagogastroduodenoscopy--Claar, R.L., Walker, L.S., & Smith, C.A., Vanderbilt University
28. Infant Distress by Procedural Phase--Cohen, L.L., McClellan, C.B., & Bernard, R.S., West Virginia University
29. Memory of a Medical Experience: Comparisons of Parents and Child Report--Cramer, L. & Hudson, J., Binghamton University
30. Predictors of Distress Status in Children Undergoing Invasive Medical Procedures--Diver, T., Tucker, C., Dahlquist, L., Lillemoe, H., Sulc, W., & Slifer, K., Kennedy Krieger Institute and University of Maryland Baltimore County
31. Externalizing Behavior Problems and Specific Distress Behaviors in Children Undergoing Invasive Medical Procedures--Diver, T. & Dahlquist, L.M., University of Maryland Baltimore County



32. Adaptive Functioning in Children with Recurrent Abdominal Pain--Duke, M., University of Kansas
33. Developmental Concepts of Pain in Children with Sickle Cell Disease--Neul, S.K.T., Applegate, H., Bockewitz, L., Griffin, K.J., & Elkin, T.D., University of Mississippi Medical Center
34. The Relation of Psychological and Biomedical Factors to Children's Experience of Abdominal Pain--Guite, J., Walker, L., Smith, C., Garber, J., ven Eys, P., & Thoits, P., Brown University
35. Young Adults Perceptions of Psychotherapy Referral for Chronic Pain--Hanrahan, J.L., Davies, W.H., Montavon, E.A., & the UWM Child Stress and Coping Research Group, University of Wisconsin-Milwaukee
36. Cognitive Behavior Therapy for Juvenile Primary Fibromyalgia Syndrome--Kashikar-Zuck, S., Jones, B.A., Graham, T., & Vaught, M.H., Children's Hospital Medical Center Cincinnati
37. Children's Appraisals of Recurrent Abdominal Pain: Impact on Family Functioning--Lipani, T. & Walker, L., Vanderbilt University
38. Effectiveness of Headache Treatment 1-year or 2-years After Initial Visit to a Multi-Disiplinary Pediatric Headache Center--Maynard, M., Powers, S., Vockell, A-L., LeCates, S., Mitchell, M., Byars, K., Patton, S., Maynard, M., McAfee, C., Davis, J., & Hershey, A., Children's Hospital Medical Center Cincinnati
39. The Relationship Between Headaches and Sleep Disturbances in Children and Adolescents--Palermo, T., Scher, M., Miller, V., Hershey, A., & Powers, S., Rainbow Babies and Children's Hospital
40. Social Consequences of Children's Pain: Do They Encourage Symptoms?--Walker, L., Lewis Claar, R., & Garber, J., Vanderbilt University
41. Girls with Gastrointestinal Problems: Ethnic Differences in Self-Reported Activity--Wilson, K., Bearman, K., LaGreca, A., Silverman, W., Thevenin, D., & Thompson, J., University of Miami
42. Treatment Adherence in an Acute Care Unit for Pediatric Sickle Cell Disease--Barakat, L.P., Lutz, M., Tarazi, R., Smith-Whitely, K. & Ohene-Frempong, K., Drexel University
43. Psycho-Educational Screening Program for Children with Sickle Cell Disease at Risk for Stroke--Burgess, E., Palermo, T., Beebe, A., Case Western Reserve University
44. Behavioral Contracting as a Treatment for Non-Compliance: Case Examples of Adolescent Patients with Sickle Cell Disease--Townsend, V., Pringle, B., & Gorski, J., Kennedy Krieger Institute
45. Preschoolers Self-Report of Procedural Approach-Avoidance--Cohen, L.L., Bernard, R.S., & McClellan, C. B., West Virginia University
46. Factor Structure and Internal Consistency of the Child Uncertainty in Illness Scale--Hartman, V., Mullins, L., Hoff, A., & King, G., Oklahoma University Health Sciences Center/Oklahoma State University
47. Life Events Among Healthy and Pediatric Samples: Discrepancy Between Parent and Child Reports--Johnston, C.A., Steele, R.G., & Phipps, S., University of Kansas
48. Greater Life Stress Among Mothers of Children with Failure To Thrive: Do Differences Really Exist?--Robinson, J.R., Jeavons, L. & Drotar, D., Case Western Reserve University



49. Agreement Between Parent- and Child-Reported Negative Life Events and the Effects of Adaptive Style--Steele, R., Johnston, C., & Phipps, S., University of Kansas
50. Are You Ready? Giving Control to a Child During Invasive Procedures--Sulc, W.E., Dahlquist, L.M., Gelfand, K.M., Switkin, M.C., University of Maryland Baltimore County
51. Measurement of Children's Reactions to Radiological Procedures--Yaldoo, D.T., Jensen, V.K., Banez, G.A., Ross, J., Goske, M., Reid, J., & Morrison, S., The Cleveland Clinic Foundation
52. Neurodevelopmental Status of a 7-Organ Multivisceral Infant Transplant Recipient--Eischen, S., Thevenin, D., & Lopez-Hernandez, C., University of Miami School of Medicine
53. Somatic Distress and Mood Disturbance in Children Undergoing Bone Marrow Transplant--Garvie, P., Lensing, S., Rai, S., & Phipps, S., St. Jude Children's Research Hospital
54. Parental and Child Distress During Child Bone Marrow Transplant--Garvie, P., Lensing, S., Rai, S., & Phipps, S., St. Jude Children's Research Hospital
55. Family Assessment and Functioning in Pediatric Liver Patients--Mitchell, M., Stark, L., Ryckman, F., Alonso, M., & Bucuvalus, J., Children's Hospital Medical Center Cincinnati
56. Differences in Neurodevelopmental Status of Pediatric Liver and Intestinal Transplant Candidates and Recipients--Thevenin, D.M., Lopez-Hernandez, C., Eischen, S.E., Kato, T., & Tzakis, A.G., University of Miami School of Medicine



**Thursday, April 26, 2001**

**POSTER PRESENTATIONS**

**11:30 a.m. – 1:30 p.m.**

**Dogwood, Live Oak, Cypress, Conference Center Lobby**

*The number beside each entry indicates the poster board number for the presentation.*

1. Nationally Representative Survey of Treatment for ADHD in the School Setting: Preliminary Results--Fabiano, G., Pelham, W., Pisecco, S., Hannah, J., Eveans, S., Manos, M., & Caserta, D., University at Buffalo
2. Associations Among Child Behavior Problems, Parental Distress And Family Functioning--Freeman, W.S., Brown, R.T., Limehouse-Eager, A., Sedlar, G., Fuemmeler, B., Anderson, D., & Craver, J., Medical University of South Carolina
3. Are Measures of Cognition Created Equal for Children with Attention Deficit Disorders? A Comparison of the Wechsler Intelligence Scale for Children-III and the Wide Range Intelligence Test--Glidden, R. & Sheslow, D., DuPont Hospital for Children
4. Preliminary Study Investigating the Utility of the Test of Everyday Attention for Children (TEA-Ch) in Differentiating ADHD from Non-ADHD in a Clinical Setting--Heaton, S., Fennell, E., & Johnson, J., University of Florida
5. Juvenile Firesetting and Attention-Deficit/Hyperactivity Disorder: Prevalence and Associated Features--Hood, K. & Houck, C., University of Florida
6. Development of the Schedule for Attention Deficit Disorder and Comorbidities (SADDC): Preliminary Findings--Hood, K. & Johnson, J., University of Florida
7. Impact of Maternal Depression on Reports of Externalizing Behaviors in Daughters with ADHD & the Protective Role Meaningful Family Rituals May Offer--Josephs, K.J. & Tomcho, T., Syracuse University
8. The Children's Medication Algorithm Project Patient and Family Education Program--Lopez, M., Texas Department of Mental Health and Mental Retardation/University of Texas at Austin
9. Concurrent Validity of the Sutter-Eyberg Student Behavior Inventory-revised with an ADHD Population--Meadvin, R., University of Florida
10. Family Environment and ADHD: The Effects of ODD and Stimulant Medications--Mitchell, M., Jones, M., & Fennell, E., University of Florida
11. Preliminary Development of Parent Stress Measure for Parents of Children with ADHD--Reader, S. & Johnson, J., University of Florida



12. Attentional Biases in Children with Anxiety Disorders and Attention-Deficit/Hyperactivity Disorder--Rich, B. & Hood, K., University of Florida
13. Adolescents with Asthma: Are They At Social Risk?--Bearman, K., LaGreca, A., Glickman, A., & Kuttler, A., University of Miami
14. Illness Uncertainty in Older Adolescents and Young Adults with Long-standing Asthma: The Role of Anxiety and Depression--Hommel, K.A., Chaney, J.M., Wagner, J.L., McLaughlin, M.S., Hoff, A.L., White, M.M., & Mullins, L.L., Oklahoma State University
15. The Effect of Providing Dust Mite Proof Covers on Adherence to Dust Mite Control Measures for Pediatric Asthma Patients--Joseph, K., Adams, C., Epperly-Cottrell, L., & Walker, K., West Virginia University
16. Evaluation of an Asthma Camp--McCay, L., Axelrad, M., Jurado, M., Pailler, M., Potrezba, J., & Friedman, A., Binghamton University
17. Factors Related to the Adjustment of Children with Asthma and Its Impact on Their Families--McCay, L., Axelrad, M., Jurado, M., Pailler, M., Potrezba, J., & Friedman, A., Binghamton University
18. Asthma-Related Morbidity, Health Care Utilization, and Child Behavior Problems--McCullough, J., Delamater, A., Grus, C., Applegate, B., Brito, A., Wurm, G., Lopex-Hernandez, C., Piedimonte, G., & Wanner, A., University of Miami
19. Does Targeting Medication Adherence and Access to Care Change ED Use Among Inner-City Children with Asthma?--Riekert, K., Bartlett, S., Lampros-Klein, F., Kolodner, K., Malveaux, F., & Rand, C., Johns Hopkins University
20. Differences Among Participants in the Childhood Asthma Management Program (CAMP): A Comparison of Families with Smoking Versus Non-Smoking Parents--Sananes, R., Bender, B., Rand, C., MacLusky, I., & Reisman, J., Hospital for Sick Children, Toronto, Canada
21. Program Evaluation of the Asthma Summer Game: Satisfaction, Outcomes, and Future Directions--Walders, N., Lee, E., Kondas, L., & Drotar, D., Case Western Reserve University
22. Development of the Cystic Fibrosis Questionnaire-Parent Version (CFQ-Child): Psychometric Analyses of a U.S. National Data Set--Davis, M., Quittner, A., Buu, A., Modi, A., & Lippestreau, M., University of Florida
23. Factors and Age as Related to Regimen Compliance in Children with Cystic Fibrosis--McCullough, J., Grus, C., Schechter, M., & Piedimonte, G., University of Miami School of Medicine
24. Parental Bereavement Reactions: A Pilot Study--Barrera, M., D'Agostino, N., Schneiderman, G., Tallot, S., & Town-Parsons, T., Hospital for Sick Children, Toronto, Canada
25. Discordance Between Sibling and Parent Report of the Impact of Chronic Illness and Disability on Siblings--Lobato, D., Kao, B., Guite, J., & Plante, W., Brown University/Rhode Island Hospital
26. Parental Views of the Adaptiveness of Defensive Response to Youth Victimization--Phelps, L., McCart, M.R., Davies, W.H., Marcelle, D.R., & The UWM Child Stress and Coping Research Group, University of Wisconsin-Milwaukee
27. Maternal Characteristics as Predictors of Maternal Response to Child Illness--Scalzo, C. & Williams, P., Loyola University of Chicago



28. Siblings as a Protective Factor for Psychosocial Functioning in Adolescents with Mobility Disabilities--Schmitt, M.M., Wallander, J.L., & Corley, L.C., University of Alabama at Birmingham
29. Neuropsychological Effects of Vertically Acquired HIV Infection in Infants and Children: A Longitudinal Perspective--Becker, L. & New, M., Children's National Medical Center
30. Written Self-disclosure as a Pediatric Chronic Disease Health Care Intervention: Findings from a Randomized Controlled Trial--Taylor, L., Wallander, J., Anderson, D., Beasley, P., & Brown, R., University of Alabama at Birmingham
31. Absence of Positive Affect in Mothers At Risk for Maltreatment--Edwards, T. & Peterson, L., University of Missouri-Columbia School of Medicine
32. Predictors of Parental Overprotection Among Adolescents With Spinal Cord Injuries--Johnson, S., Loyola University of Chicago
33. Is It Ever Safe to Leave A Child Alone? The Effect of Safety Instruction in a Resistance to Temptation Paradigm--Maitner, A., Eckerd College
34. Factor Analysis of the Injury Behavior Checklist--Marquine, M. & Hardy, M., Eckerd College
35. The Role of Executive Functioning and Family Coping in Maximizing Independence in Children with Epilepsy Undergoing Hemispherectomy--Nelson, Chad. C., Gioia, G.A., Smith, C., Isquith, P.K., Vining, E.P., & Freeman, J., Mt. Washington Pediatric Hospital
36. Burn Prevention in Children Through an Educational Restaurant Intervention--Piazza-Waggoner, C., Ervine, A., & Adams, C., West Virginia University
37. Language and Reading Deficits in WIV-Infected Children: The Roles of Otitis Media, HIV Illness Parameters, and Environmental Risk Factors--Ries, J., Bachanas, P., & Morris, M., Georgia School of Professional Psychology
38. Comparison of Parents' Report of their Children's Functioning Before and After Organ Transplant--Thevenin, D.M., Lopez-Hernandez, C., Eischen, S.E., Kato, T., & Tzakis, A.G., University of Miami School of Medicine
39. A Comparison of Neuropsychological Profiles in Asymptomatic Children with HIV Versus Symptomatic Children with AIDS--Vazquez, E., Sorgen, K., Conte, P., Jensen, M., Willen, E., Lee, D., & Armstrong, D.A., University of Miami
40. The PedsQL in Pediatric Diabetes: Reliability and Validity of the Quality of Life Generic Core Scales and Diabetes Module in Type 1 and Type 2 Diabetes--Jacobs, J., Matney, J., Varni, J., Bennett Johnson, S., Jones, K., Gottschalk, M., Clemons, R., Speer, H., & Kaufman, F., Kaiser Permanente
41. Disease Variables Associated with Health-Related Quality of Life in Children Infected with HIV/AIDS--Levy, J., Tepper, V., Cant, C., Mitchell, C., & Armstrong, D., University of Miami School of Medicine
42. Functional Outcomes and Health-Related Quality of Life (HRQL) in Children with Headache--McAfee, D., Powers, S., Vockell, A-L., LeCates, S., Mitchell, M., Byars, K., Patton, S., Maynard, M., Davis, J., & Hershey, A., Children's Hospital Medical Center Cincinnati
43. Health-related Quality of Life of Children with Epilepsy--Miller, V., Palermo, T.M., & Grewe, S., Case Western Reserve University
44. A New Measurement Tool for Health-Related Quality of Life for Children with Cystic Fibrosis--Modi, A., Pappachan, S., & Quittner, A., University of Florida



45. Factor and Sensitivity Analysis of the Diabetes Quality of Life Measure (DQOL)--Perwien, A., Bennett Johnson, S., Algina, J., & Silverstein, J., University of Florida
46. Validation of the Cystic Fibrosis Questionnaire for Parents of Children with Cystic Fibrosis (CFQ-Parent)--Quittner, A., Davis, M., Buu, A., & Lippstreu, M., University of Florida
47. Quality of Life in Youths with Cardiac Arrhythmia--Schneider, K., Delamater, A., Geith, T., Young, M., & Wolff, G., University of Miami
48. The Health-Related Quality of Life of Caregivers of Children with Chronic Health Conditions--Schwartz, L., Palermo, T., & Drotar, D., Case Western Reserve University
49. Quality of Life in Children with RAP--Williams, S., Voss, K., Lewis Claar, R., Lipani, T., & Walker, L., Vanderbilt University
50. The Effects of Parental Adjustment on Child Adjustment in Families of Children With and Without Spina Bifida--Friedman, D., Holmbeck, G., Uli, N., & Millman, E., Loyola University of Chicago
51. Maternal and Paternal Parenting Congruence and Psychosocial Adjustment in Families and Children with Spina Bifida--Greenley, R.N., Holmbeck, G., Alcala, S., & Fischer, S., Loyola University of Chicago
52. Increasing Compliance in a Pediatric Patient with End-Stage Renal Disease Through the Use of Differential Positive Reinforcement--Lowery, K., Eischen, S., & Gorski, J., Kennedy Krieger Institute
53. A Longitudinal Study of Pubertal Maturation and Familial Functioning During the Transition to Adolescence in Children with Spina Bifida--Millstein, R., Holmbeck, G., Skocic, A., & Milat, A., Loyola University of Chicago
54. Assessing Self-Concept in Children With and Without Spina Bifida: Establishing Factorial Invariance in Harter's Self-Perception Profile for Children and Teacher's Rating Scales--Thill, A.D.W., Holmbeck, G., & Bryant, F.B., Loyola University of Chicago
55. Self-regulation Predictors of Medication Adherence Among Ethnically Different Children with Renal Transplants--Tucker, C.M., Herman, K.C., Fennell, R.S., Pedersen, T., Vosmik, J.R., & Zayco, R.A., UF
56. The Longitudinal Effect of Perceived and Observed Family Functioning on Internalizing Symptoms in Young Adolescents with Spina Bifida--Westhoven, V.C., Holmbeck, G.N., & Nelson, C., Loyola University, Chicago
57. Developmental Changes in Adolescent Girls' Reasons for Intercourse Both Initially and Over Time--Cotton, S., Rosenthal, S., Biro, F., & Mills, L., Children's Hospital Medical Center Cincinnati
58. Adolescent Health-Compromising Behaviors: Breaking Confidentiality to Report Risk--Rae, W.A., Razo, N.P., Sullivan, J.R., George, C.A., & Ramirez, E., Texas A & M University
59. Health Risk Behaviors Among Adolescents and Young Adults with Congenital Heart Defects--Reid, G., Irvine, M., McCrindle, B., Blitz-Miller, T., Sananes, R., Harrison, D., Ritvo, G., Siu, S., & Webb, G., University of Western Ontario
60. Adolescent Substance Use and Peer Sociometric Status--Burden Leslie, M., Prinstein, M., & Cohen, G., Yale University



61. Adolescent Oral Sex: An Increasing Risk for Sexually Transmitted Diseases--Meade, C., Prinstein, M., & Cohen, G., Yale University
62. Relationship Between Familial and Parental Psychological Functioning and the Physical Symptoms for Children Diagnosed Positive and Negative Neurocardiogenic Syncope--Blount, R.L., Cheng, P.S., Morris, J.A.B., Brown, R.T., & Campbell, R.M., University of Georgia
63. Relationship Between Familial and Parental Psychological Functioning and the Psychological Adaption of Children Diagnosed Positive and Negative Neurocardiogenic Syncope--Blount, R.L., Cheng, P.S., Morris, J.A.B., Brown, R.T., & Campbell, R.M., University of Georgia
64. Gender Differences in the Relationship Between Familial, Maternal, and Paternal Psychological Functioning and Children's Physiological Symptoms of Syncope--Cheng, P.C., Blount, R.L., Morris, J.A.B., Brown, R.T., & Campbell, R.M., University of Georgia
65. Gender Differences in the Relationship Between Familial, Maternal, and Paternal Psychological Functioning and the Psychological Adaption of Children with Neurocardiogenic Syncope Symptoms--Cheng, P.C., Blount, R.L., Morris, J.A.B., Brown, R.T., & Campbell, R.M., University of Georgia



**Friday, April 27, 2001**

**POSTER PRESENTATIONS**

**11:30 a.m. – 1:30 p.m.**

**Dogwood, Live Oak, Cyprus, Conference Center Lobby**

*The number beside each entry indicates the poster board number for the presentation.*

1. Anxiety and Family Word View Predict Posttraumatic Stress in Childhood Cancer Survivors and Their Parents--Alderfer, M., Rourke, M., Kunin-Batson, A., & Kazak, A., Children's Hospital of Philadelphia
2. The Psychosocial Assessment Tool (PAT): Development of a Brief Screening Instrument for Identifying High Risk Families in Pediatric Oncology--Kazak, A., Prusak, A., McSherry, M., Simms, S., Beele, D., Rourke, M., Alderfer, M., & Lange, B., Children's Hospital of Philadelphia
3. Behavioral and Cognitive Effects of Steroids in ALL Maintenance Therapy--Soliday, E., Butler, R., & Jones, G., Washington State University- Vancouver
4. Social Behavior and Disease Obviousness Contributing to the Peer Acceptance of Children with Chronic Illness--Alderfer, M., Wiebe, D., & Hartmann, D., Children's Hospital of Philadelphia
5. Implementation of Continuous Subcutaneous Insulin Infusion Pump Therapy in Adolescents with Type 1 Diabetes: A First Look at the First Patients--Alioto, A., Children's Hospital
6. Metabolic Control and Nocturnal Enuresis in Children with Type 1 Diabetes Mellitus--Bell, S., Monaco, L., Rayfield, A., & Silverstein, J., University of Florida, Child & Adolescent Psychiatry
7. Impact of Knowledge of Diabetes Status on Young Adults' Perceptions of Self-care and Eating Behaviors--Berlin, K.S., Davies, W.H., Hains, A.A., Sass, D.A., & The UWM Child Stress and Coping Research Group, University of Wisconsin, Milwaukee
8. Newborn Genetic Screening: Maternal Coping Strategies for Mothers with Infants at Increased Risk for Type I Diabetes--Carmichael, S., Baughcum, A., Lenglet, P., She, J., Shatz, D., & Bennett Johnson, S., University of Florida
9. Help, I Need Somebody and Not Just Anybody: Perceived Helpfulness and Therapy Outcomes of Family Therapy with Teens with Diabetes--Harris, M., Greco, P., Jackson, S., Wysocki, T., & Taylor, M., Washington University School of Medicine
10. Servicing Train Wrecks, Derailments and Other Calamities: Home-Based Family Therapy for Adolescents with Poorly Controlled Diabetes--Harris, M. & Mertlich, D., Washington University School of Medicine
11. Predicting Fear of Hypoglycemia in Children with IDDM--Kamps, J. & Roberts, M., University of Kansas
12. Peer Support and Adolescent Diabetes Management and Control--Kasmen, L., Shroff Pendley, J., Donze, J., Swenson, C., Miller, D., & Reeves, G., duPont Hospital for Children
13. Transition to the Insulin Pump: What Leads to Success?--Mednick, L., Streisand, R., & Cogen, F., Children's National Medical Center



14. Blood Glucose Estimations in Adolescents with Type I Diabetes: Predictors of Accuracy and Error--Meltzer, L., Bennett Johnson, S., & Pappachan, S., University of Florida
15. Neurocognitive Functioning in Adolescents with Type I Diabetes: A Two-Year Preliminary Examination--Messenger, C., Marschall, D., Shah-Hosseini, M., Chen, R., & Holmes, C., Georgetown University
16. Enhancing Knowledge, Coping, and Independence: A Workshop for School-Aged Children with Diabetes--Mitchell, B., Rybansky, S., McDermott, K., Hawthornewaite, L., & Murphy, S., London Health Sciences, Children's Hospital of Western Ontario
17. Mealtime Behaviors, Parenting Stress, and Dietary Intake in a Sample of Preschool-Age Children with Type 1 Diabetes Mellitus--Patton, S., Powers, S., Byars, K., Mitchell, M., Schwarber, L., Deeks, C., McAfee, C., Maynard, M., Standiford, D., & Dolan, L., Children's Hospital Medical Center Cincinnati
18. Threats to Growth Hormone Therapy Adherence: Pre-Treatment Factors--Hazen, R., Alliger, D., & Sandberg, D., University at Buffalo, Children's Hospital of Buffalo
19. Enhancing Children's Participation in Diabetes Medical Visits--Perwien, A., Bennett Johnson, S., & Silverstein, J., University of Florida
20. Effectiveness of a Cognitive Behavioral Intervention to Increase Regimen Adherence in Adolescents with Type I Diabetes--Silverman, A., Hains, A., & Davies, W., University of Wisconsin-Milwaukee
21. Pediatric-Specific Psychological Functioning Among Parents of Children Newly Diagnosed with Diabetes--Streisand, R., Mednick, L., Nadeem, S., Barnett, P., Milaszewski, K., Turek, J., & Austin, A., Children's National Medical Center
22. Learning Modality Effects on Diabetes Knowledge in Children with Insulin-Dependent Diabetes Mellitus (IDDM)--van Schaick, K., Lynch, P., Smith, K., Chen, R., & Holmes, C., Virginia Commonwealth University
23. Designing a Group Intervention for Children with Diabetes: Developmental and Psychosocial Considerations--Weiss, K., Department of Behavioral Medicine, Brooke Army Medical Center
24. Family Composition as a Predictor of Outcomes of Intensive Therapy of Usual Care for Youths with Type I Diabetes--Wysocki, T., Harris, M., Buckloh, L., Taylor, A., Sadler, M., Fox, L., Mauras, N., & White, N., Nemours Children's Clinic
25. Meal Duration, Weight Status, and Mealtime Difficulties in Medically Complex Children--Burklow, K.A., McGrath, A.M., Sullivan, A., & Rudolph, C.D., Children's Hospital Medical Center Cincinnati
26. Child, Parent, and Family Factors and Feeding Dynamics in African-American and Caucasian Families--Davies, W., Ackerman, L., Zeller, M., Vannatta, K., & Noll, R., University of Wisconsin-Milwaukee
27. Predicting Healthy Lifestyle Behaviors for the Prevention of the Later Development of Osteoporosis Among Preadolescent Girls: The Roles of Social Support, Knowledge, and Self-Efficacy--Levers-Landis, C., Burant, C., Drotar, D., Burgess, E., Kwoh, C., Rainbow Babies and Children's Hospital/Case Western Reserve School of Medicine
28. Appetite Regulation in Children with Failure to Thrive--Kedesdy, J.H. & Ritacco, L., University of Massachusetts Medical School



29. Interdisciplinary Assessment and Treatment of Feeding Difficulties in Three Preschoolers of Varying Etiologies--Mathews, J., Levering, K., Williams, A., & Keller, K., Munroe/Meyer Institute/University of Nebraska Medical Center
30. Reinforcement and Exposure Treatment of Choking Phobia: A Single Subject Design--Phatak, V., University of Wisconsin-Milwaukee
31. An Examination of Contextual Variables in the Treatment of Chronic Food Refusal--Piazza-Waggoner, C., Kim, C., Girolami, P. & Anderson, C., West Virginia University
32. Outpatient Based Parent Training of Escape Extinction and Differential Reinforcement to Treat Food Selectivity--Piazza-Waggoner, C., McCartney, E., & Anderson, C., West Virginia University
33. Relationship Between Maternal Feeding Practices and Beliefs and Overweight in Preschoolers--Baughcum, A., Powers, S., Bennett Johnson, S., Chamberlin, L., Deeks, C., Jain, A., & Whitaker, R., University of Florida
34. Family Interactions in Pediatric Obesity: The Role of Expressed Emotion--Chambers, C.T., Jelalian, E., & Mehlenbeck, R., Brown University School of Medicine
35. Childhood Depression and Treatment Outcome in an Interdisciplinary Clinical Program for Pediatric Obesity--Cote, M., Zeller, M., Huth, B., Sullivan, A., Kirk, S., & Daniels, S., Children's Hospital Medical Center Cincinnati
36. Prevention of Child Obesity in Primary Care: Assessment of Parent Concerns--Kedesdy, J.H. & Guertin, T.L., University of Massachusetts Medical School
37. Social Functioning and Perceived Social Support Experienced by Overweight Adolescents--Mehlenbeck, R., Boergers, J., Jelalian, E., & Speith, L., Brown University School of Medicine, Rhode Island Hospital
38. Adolescent Obesity, Peer Victimization, & Romantic Relationships--Pearce, M., Prinstein, M., & Boergers, J., Yale University
39. Differential Validity of the Behavior Assessment System for Children-Parent Rating Scales in Identifying Children with Functional Gastrointestinal Pain Disorders--Robins, P., Schoff, K., Glutting, J., & Abelkop, A., Children's Hospital of Philadelphia
40. The Relationship of Family and Peer Factors to Risky Sexual Behavior: High Risk Youth--Gillapsy, J., Ray, J., Neighbors, B., & Mullins, L., Oklahoma State University
41. Characteristics of Referred and Non-referred Patients to a Pediatric Consultation Service--Baker, J.G., Carter, B., Kronenberger, W., Grimes, L., Smith, C., & McGraw, K., University of Louisville
42. Virginia's Child Health Investment Partnership (CHIP): Service-Delivery Challenges and Opportunities--Boevig, C.A., Bradbury, K., Davis, T.E., Finney, J.W., Virginia Tech
43. A Case Controlled Study of Patients Seen by a Pediatric Consultation Service--Carter, B., Baker, J., Kronenberger, W., Grimes, L., Smith, C., Crabtree, V., & McGraw, K., University of Louisville School of Medicine
44. Barriers to the Delivery of Mental Health Services for Children: Early Recognition and Intervention--Cocco, K.M. & Kanz, J., University of Iowa
45. Physicians Attitudes and Experiences Regrading Suspected Neonatal Herpes--Cotton, S., Rosenthal, S., Siegel, R., & Connelly, B., Children's Hospital Medical Center Cincinnati



46. Perceived Effectiveness and Goal Attainment on a Pediatric Consultation Service--Crabtree, V., Carter, B., Kronenberger, W., Baker, J., Grimes, L., Smith, C., & McGraw, K., University of Louisville Medical School
47. Decision Making and Comfort Level of Primary Care Physicians and Pediatric Subspecialists in Addressing Pediatric Mental Health Concerns--Kullgren, K., Sirl, K., Sylvia, S., & Hofman, R., St. Louis Children's Hospital
48. The Influences of Parenting Factors on Health Service Use Among Adolescents With Sickle Cell Disease--Logan, D., Children's Hospital of Philadelphia
49. Primiparous Mothers' Health Seeking Behaviors for Their Babies--Mills, L., Rosenthal, S., Atherton, H., & Kotagal, U., Children's Hospital Medical Center Cincinnati
50. A Model for Multisite Collaboration on Pediatric Psychology Research and Mentoring: The Ohio Child Health Research Initiative (OCHRI)--Power, S., Drotar, D., Linsheid, T., & Stark, L., Children's Hospital Medical Center Cincinnati
51. Common Psychosocial Concerns of Parents of Young Children Seen in Primary Care Appear To Be Clinically Important--Reid, G., Stewart, M., Vingilis, E., Pederson, D., Wetmore, S., Dickie, G., Osmun, T., Jordan, J., & Robertson, P., University of Western Ontario
52. Primary Care Provider Identification of Pediatric Psychiatric Illness: A Brief Review--Roehrig, H., Children's Hospital Medical Center Cincinnati
53. Psychological Adjustment, Substance Use, and Risky Sexual Behavior: Intervention and Prevention Challenges in Adolescent Primary Care--Flores, A., Sarett-Cuasay, E., Bachanas, P., Morris, M., Lewis-Gess, J., & Sawyer, M., Emory University School of Medicine
54. Child Health Status and Mother-Preschooler Conversations About Health Experiences--Rubin, L., Scalzo, C., Haden, C., Burke, R., & Williams, P., Loyola University of Chicago
55. Factors Associated with Physician Communication of Initial Treatment Plans to Pediatric Asthma Patients and Their Families--Walker, K., Joseph, K., & Adams, C., West Virginia University
- 56. Early Intervention Systems Redesign: Opportunities for Leadership in Child Health Policy--Walljasper, C., Farmer, J., & Goff, P., University of Missouri-Columbia School of Medicine
57. Psychological Adjustment, Social Support, and Coping Style in HIV Infected Adolescents: Implications for Intervention--Bachanas, P., Morris, M., Lewis-Gess, J., Sarett-Cuasay, E., Myszka, K., Emory University School of Medicine
58. Electronic Monitoring of Adherence to Asthma Medications: Advantages, Disadvantages, and Issues--Adams, C., Spaulding, S., & Girolami, P., West Virginia University
- 59. A Computerized Health Assessment in Adolescent Primary Care--Black, M., University of Maryland Baltimore County
60. Implementing Technological Innovations in Assessment and Research--Briery, B., Levy, J., Cant, K., & Armstrong, D., University of Miami School of Medicine
61. Evaluation of the Starbright Explorer Series CD-ROM for Young Adolescents with Cystic Fibrosis--Davis, M., Quittner, A., Larsen, E., & Stack, C., University of Florida



62. Using On-Line Resources to Cope with a Developmental Transition--Frauenglass, S., Garza, C., & Hawkins, A., Northern Illinois University
63. Family Videocounseling for Rural Teens with Seizure Disorders: The impact of Therapeutic Alliance and Technology Comfort on Treatment Outcome--Fritz, S. & Glueckauf, R.L., UF
64. Participant Event Monitoring Technology--Peterson, L. & Damashek, A., University of Missouri
65. Computerized Assessment of Gastrointestinal Symptoms in Pediatric Patients--Walker, L. & Sorrells, S., Vanderbilt University